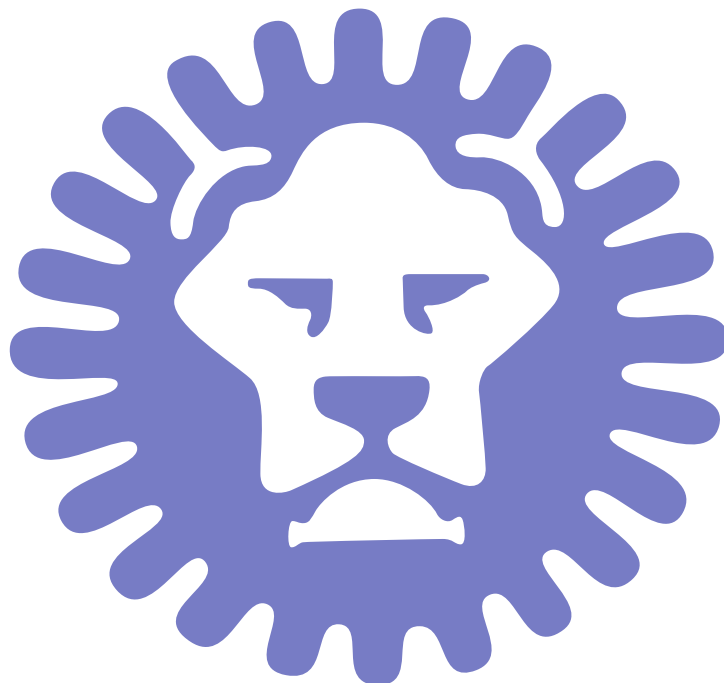


MONARCH



P.O. Box #250
Adel, IA 50003
Phone: (800) 343-9370
Fax: (515) 935 - 4670

1850 West Adriatic Place
Englewood, CO 80110
Phone: (303) 935-4679
Fax: (303) 935 - 4670



TABLE OF CONTENTS

PRODUCT CATALOG

WARRANTY INFORMATION..... 3-6

EGRESS REQUIREMENTS

Egress Requirements.....7

IRC 2015 Code Section R310..... 8-9

WINDOWS SYSTEMS

Cast in Place Vinyl - Premier V

Picture Window11

Bucko Sizes13

Hopper.....15

Cast in Place Steel

Picture Windows

KD & Welded Frame..... 17-21

Vinyl Insert (Vinyl Pro 4)22

Vinyl Casement.....25

Bucko Windows

Frame.....29

Vinyl Slider Insert (Vinyl Pro).....31

Aluminum Inserts.....33

Steel Access Door.....37

Midwest Series Frame & Inserts38

Pour-Mold

Picture & Bucko Windows42

Block Out Molds.....43

Block Steel

Standard Steel Frame & Aluminum Insert.....46

WINDOW WELLS

Fiberglass

Quarry View48

Steel

Stif Back® II.....50

Deluxe Straight.....55

Economy Round & Straight57

WINDOW WELL COVERS

Thermal Hinge59

EZ Thermal.....60

Steel Grate/Stif Back® II.....61

Poly Grate Cover63

LADDERS

Ladders for Window Wells64

FOUNDATION VENTS

Premier Vinyl Vents.....66

Steel Vent System69

REPAIR/REPLACEMENT PARTS

Premier V Replacement Parts.....71

Vinyl Pro / Pour Molds Replacement Parts73

LIMITED WARRANTY



Standing behind our Products

IMPORTANT NOTICE: Read this entire Monarch Materials Group, Inc. ("Monarch") Limited Warranty and Limitation of Liability ("Limited Warranty") before purchasing or installing this product. Refer to the Monarch Installation Guides and Maintenance Information (available at www.monmatgrp.com) for the required installation and maintenance of your Monarch products. By installing or using this product you are acknowledging that this Limited Warranty is part of the terms of sale.

This Limited Warranty applies to all Monarch products. Monarch makes the following exclusive, express Limited Warranties for Monarch products installed within the United States and Canada, subject to the stated conditions, limitations and disclaimers.

1. DEFINITIONS APPLICABLE TO THIS LIMITED WARRANTY

For purposes of this Limited Warranty, "Original Purchaser" shall mean the original individual or entity owner of the real property on which the Monarch product was originally installed or used, but does not include Commercial Purchasers.

For purposes of this Limited Warranty, "Commercial Purchasers" shall mean the original individual or entity owner of the real property on which the Monarch product was originally installed or used in commercial properties or retail properties, including but not limited to schools, churches, apartment complexes, multi-family residential buildings, government-owned buildings and office buildings.

For purposes of this Limited Warranty, "Lifetime" of the product shall mean the length of time the product is owned and used under normal and reasonable conditions by the Original Purchaser.

2. LIMITED WARRANTIES FOR SPECIFIED MONARCH PRODUCTS

Vinyl Windows. Lifetime Limited Warranty.

Subject to the stated conditions and disclaimers set forth below, Monarch warrants to the Original Purchaser that its Vinyl Windows products, including Vinyl Pro/Pro 4 Insert, Vinyl Pro/Pro 4 Pour-Mold, Premier V® Windows, and Casement, but excluding Steel Frames, shall be free of manufacturing defects in material or workmanship with respect to peeling, flaking, blistering, corrosion and rotting that significantly impair their proper operation and function of the product for the Lifetime of the product. If Monarch is given notice of a defect in materials or workmanship occurring within the Lifetime of the product, Monarch shall, at its sole option: (1) repair or replace the defective part(s) or product(s) or (2) refund the original purchase price. This Limited Warranty on Vinyl Windows products specifically excludes the Insulated Glass component of the Vinyl Windows product, which is the subject of a separate limited warranty below. This Limited Warranty on Vinyl Windows products does not cover the cost of shipping for the repaired or replacement part(s) or product(s) or labor to: (1) remove and dispose of the defective part(s) or product(s) or (2) install the repaired or replacement part(s) or product(s).

Steel Window Wells and Accessories.

Ten-Year (10-Year) Limited Warranty.

Subject to the stated conditions and disclaimers set forth below, Monarch warrants to the Original Purchaser that its Steel Window Wells and Accessories products, including Stif Back® II, Deluxe Straight, Economies, Steel Well Extensions and Ladders shall be free of manufacturing defects in material or workmanship that significantly impair their proper operation and function of the product for ten (10) years from the date of manufacture by Monarch. If Monarch is given notice of a defect in materials or workmanship occurring within ten (10) years from the date of manufacture by Monarch, Monarch shall, at its sole option: (1) repair or replace the defective part(s) or product(s) or (2) refund the original purchase price. This Limited Warranty on Steel Window Wells and Accessories products does not cover the cost of shipping for the repaired or replacement part(s) or product(s) or labor to: (1) remove and dispose of the defective part(s) or product(s) or (2) install the repaired or replacement part(s) or product(s).

Composite Window Wells. Ten-Year (10-Year) Limited Warranty.

Subject to the stated conditions and disclaimers set forth below, Monarch warrants to the Original Purchaser that its Composite Window Wells products, including Quarry View™, shall be free of manufacturing defects in material or workmanship that significantly impair their proper operation and function of the product for ten (10) years from the date of manufacture by Monarch. If Monarch is given notice of a defect in materials or workmanship occurring within ten (10) years from the date of manufacture by Monarch, Monarch shall, at its sole option: (1) repair or replace the defective part(s) or product(s) or (2) refund the original purchase price. This Limited Warranty on Composite Window Wells products does not cover the cost of shipping for the repaired or replacement part(s) or product(s) or labor to: (1) remove and dispose of the defective part(s) or product(s) or (2) install the repaired or replacement part(s) or product(s).

Window Well Covers. Ten-Year (10-Year) Limited Warranty.

Subject to the stated conditions and disclaimers set forth below, Monarch warrants to the Original Purchaser that its Window Well Covers products, including Thermal Hinged Cover, EZ Cover, Steel Grate, Polycarbonate Top Cover, shall be free of manufacturing defects in material or workmanship that significantly impair their proper operation and function of the product for ten (10) years from the date of manufacture by Monarch. If Monarch is given notice of a defect in materials or workmanship occurring within ten (10) years from the date of manufacture by Monarch, Monarch shall, at its sole option: (1) repair or replace the defective part(s) or product(s) or (2) refund the original purchase price. This Limited Warranty on Window Well Covers products does not cover the cost of shipping for the repaired or replacement part(s) or product(s) or labor to: (1) remove and dispose of the defective part(s) or product(s) or (2) install the repaired or replacement part(s) or product(s). Steel Frame & Non-Vinyl Inserts. Ten-Year (10-Year) Limited Warranty.

LIMITED WARRANTY



Subject to the stated conditions and disclaimers set forth below, Monarch warrants to the Original Purchaser that its Steel Frame & Non-Vinyl Inserts products, including Picture Window Frames, Bucko Window Frames, Access Doors and Aluminum Inserts, shall be free of manufacturing defects in material or workmanship that significantly impair their proper operation and function of the product for ten (10) years from the date of manufacture by Monarch. If Monarch is given notice of a defect in materials or workmanship occurring within ten (10) years from the date of manufacture by Monarch, Monarch shall, at its sole option: (1) repair or replace the defective part(s) or product(s) or (2) refund the original purchase price. This Limited Warranty on Steel Frame & Non-Vinyl Inserts products does not cover the cost of shipping for the repaired or replacement part(s) or product(s) or labor to: (1) remove and dispose of the defective part(s) or product(s) or (2) install the repaired or replacement part(s) or product(s).

Vents. Ten-Year (10-Year) Limited Warranty.

Subject to the stated conditions and disclaimers set forth below, Monarch warrants to the Original Purchaser that its Vents products, including Premier V Vents and Steel Vents, shall be free of manufacturing defects in material or workmanship that significantly impair their proper operation and function of the product for ten (10) years from the date of manufacture by Monarch. If Monarch is given notice of a defect in materials or workmanship occurring within ten (10) years from the date of manufacture by Monarch, Monarch shall, at its sole option: (1) repair or replace the defective part(s) or product(s) or (2) refund the original purchase price. This Limited Warranty on Vents products does not cover the cost of shipping for the repaired or replacement part(s) or product(s) or labor to: (1) remove and dispose of the defective part(s) or product(s) or (2) install the repaired or replacement part(s) or product(s).

Insulated Window Glass. Ten-Year (10-Year) Limited Warranty.

Subject to the stated conditions and disclaimers set forth below, Monarch warrants to the Original Purchaser that its Insulated Window Glass products shall be free of manufacturing defects in material or workmanship that significantly impair their proper operation and function of the product for ten (10) years from the date of manufacture by Monarch. Specifically, Monarch warrants that its Insulated Window Glass products will not develop any material visual obstructions resulting from premature failure of the insulated glass seal. If Monarch is given notice of a defect in materials or workmanship occurring within ten (10) years from the date of manufacture by Monarch, Monarch shall, at its sole option: (1) repair or replace the defective part(s) or product(s) or (2) refund the original purchase price. This Limited Warranty on Insulated Window Glass products does not cover the cost of shipping for the repaired or replacement part(s) or product(s) or labor to: (1) remove and dispose of the defective part(s) or product(s) or (2) install the repaired or replacement part(s) or product(s).

Powder Coated Paint. One-Year 1-Year) Limited Warranty.

Subject to the stated conditions and disclaimers set forth below, Monarch warrants to the Original Purchaser that its Powder Coated Paint products shall be free of manufacturing defects in material or workmanship that significantly impair their proper operation and function of the product for one (1) year from the date of manufacture by Monarch, but specifically excludes scratching, marring or abrasions due to transportation, handling

and/or installation. If Monarch is given notice of a defect in materials or workmanship occurring within one (1) year from the date of manufacture by Monarch, Monarch shall, at its sole option: (1) repair or replace the defective part(s) or product(s) or (2) refund the original purchase price. This Limited Warranty on Powder products does not cover the cost of shipping for the repaired or replacement part(s) or product(s) or labor to: (1) remove and dispose of the defective part(s) or product(s) or (2) install the repaired or replacement part(s) or product(s).

All Monarch Products purchased by Commercial Purchasers. Non-Transferrable One-Year (1-Year) Limited Warranty.

Subject to the stated conditions and disclaimers set forth below, Monarch warrants to Commercial Purchasers that all Monarch products shall be free of manufacturing defects in material or workmanship that significantly impair their proper operation and function of the product for one (1) year from the date of manufacture by Monarch. If Monarch is given notice of a defect in materials or workmanship occurring within one (1) year from the date of manufacture by Monarch, Monarch shall, at its sole option: (1) repair or replace the defective part(s) or product(s) or (2) refund the original purchase price. This Limited Warranty on all other Monarch products does not cover the cost of shipping for the repaired or replacement part(s) or product(s) or labor to: (1) remove and dispose of the defective part(s) or product(s) or (2) install the repaired or replacement part(s) or product(s).

CONDITIONS APPLICABLE TO ALL SALES OF MONARCH PRODUCTS AND LIMITED WARRANTIES

3. LIMITATIONS OF LIMITED WARRANTY

FAILURE TO COMPLY WITH MONARCH INSTALLATION AND MAINTENANCE INSTRUCTIONS VOIDS ALL WARRANTIES UNLESS IT IS CLEARLY ESTABLISHED BY THE BUYER OR USER OF THE PRODUCT THAT THE DEFECT OR FAILURE IS UNRELATED TO SUCH NONCOMPLIANCE.

This Limited Warranty does not extend to the use of Monarch Products under abnormal conditions, conditions that exceed the stated performance parameters of the product as provided on the product labeling and under conditions not reasonably foreseeable to, or beyond the control of, Monarch. Buyer and User assume all risk of any such use. This Limited Warranty is the exclusive warranty for the Covered Monarch Products. **NEITHER MONARCH NOR SELLER MAKE ANY OTHER WARRANTIES, EXPRESS OR IMPLIED, INCLUDING ANY IMPLIED WARRANTIES OF MERCHANTABILITY, FITNESS FOR A PARTICULAR PURPOSE OR OTHERWISE. THERE ARE NO WARRANTIES THAT EXTEND BEYOND THOSE STATED IN THIS LIMITED WARRANTY.** This disclaimer of implied warranties may be limited or ineffective if you are a consumer, as that term is defined by the Magnuson Moss Act, 15 U.S.C. § 2301, in which case the duration of any implied warranties shall be two (2) years from the date of sale by Monarch or its authorized dealer. Some states do not allow limitations on how long an implied warranty lasts for consumers, so the above limitation may not apply to you, in which event the manner of presenting any claim thereon shall be the same as provided in the express warranties stated herein. This Limited Warranty gives you specific legal rights, and you may have additional rights, which vary from state to state.

LIMITED WARRANTY



4. LIMITATION OF LIABILITY

This Limited Warranty sets forth the maximum liability for our products. **IN NO EVENT (INCLUDING WHERE THIS LIMITED WARRANTY IS DEEMED NOT TO APPLY TO THE SALE OR PRODUCT IN QUESTION) SHALL MONARCH OR SELLER BE LIABLE FOR ANY INCIDENTAL, CONSEQUENTIAL OR SPECIAL DAMAGES RESULTING FROM THE SALE, INSTALLATION OR USE OF ANY MONARCH PRODUCTS.**

Some states do not allow the exclusion or limitation of incidental or consequential damages for consumers, so the above limitation or exclusion may not apply to you.

5. LIMITATION OF REMEDY

THE EXCLUSIVE REMEDY OF THE BUYER AND USER, AND THE SOLE LIABILITY OF MONARCH AND SELLER FOR ANY AND ALL CLAIMS, LOSSES, INJURIES OR DAMAGES (INCLUDING CLAIMS BASED ON BREACH OF WARRANTY, CONTRACT, NEGLIGENCE, TORT, STRICT LIABILITY OR OTHERWISE) RESULTING FROM THE SALE, INSTALLATION OR USE OF THE MONARCH PRODUCTS, SHALL BE, AT THE OPTION OF MONARCH, THE REPAIR OR REPLACEMENT OF THE PRODUCT OR THE RETURN OF THE ORIGINAL PURCHASE PRICE OF THE PRODUCT, AS PROVIDED HEREIN. IN NO EVENT SHALL THE LIABILITY OF MONARCH OR SELLER EXCEED THE PRICE PAID FOR THE PRODUCT. Replacement products shall be a reasonably similar current product and may not exactly match the original. Even where Monarch chooses to repair or replace product within the stated Limited Warranty period, the costs covered by this warranty do not include shipping or freight for the repaired or replacement part(s) or product(s), any labor or material costs associated with removing the defective product, installing the replaced product or finishing space surrounding or adjacent to the repaired or replaced product. Replacement product provided pursuant to this Limited Warranty shall be subject to the applicable Monarch product Limited Warranty only for the remainder of the original warranty period on the product being replaced. If Monarch or Seller provides any of the remedies identified in the Limited Warranty above (i.e., repair, replacement of product or refund of the purchase price), then Buyer and/or User agree that this limitation of remedy shall not have failed of its essential purpose.

6. DISCLAIMER — WHAT THE LIMITED WARRANTY DOES NOT COVER

This Limited Warranty covers only defects in material or workmanship of Monarch products. Monarch is not responsible for or makes no warranty, limited, implied or otherwise, as to product failure, loss or damage due to or resulting from:

- Normal wear and tear.
- Improper storage, handling, installation, use, alteration, modification or maintenance.
- Failure to perform reasonable and necessary maintenance.
- Accident, misuse, abuse, alterations, improper handling, operation or cleaning.
- Accidents, including accidental glass breakage.
- Improperly installed security or alarm systems.

- Acts of God, fire, flood, earthquake or other natural causes
- Exposure to excessive heat and/or cold beyond naturally occurring conditions.
- Improper removal of any permanent warning or identification labels or markings on the product.
- Rusting or corrosion of non-vinyl products or components due to the close proximity to coastal areas, caused by electrical conductivity, abnormal soil conditions unique to the installation locale or electrically charged rebar.
- Yellowing of, rusting of and condensation inside the polycarbonate of window well cover products
- Inappropriate or unintended use or uses of the product.
- Minor blemishes in glass.
- Color variation or variations of the glass.
- Glass breakage for any cause or reason.
- Application of after-market window films to glass surfaces.
- Stress arising from glass surface temperature differentials or caused by building settlement or movement.
- Structural settlement, movement or vibration.
- Condensation on external surfaces of the steel frame, window and/or glass which may occur as the natural result of humidity and interior/external temperature differentials.
- The gradual, natural migration of inert gas infill used in insulated glass products.
- Loss of energy efficiency resulting from migration of inert gas infill.
- Non-factory repairs or modifications performed by anyone other than Seller (or one of its subcontractors).
- Normal wear, fading or discoloration from product usage, age or exposure to direct sunlight.
- Acid rain or other corrosive elements.
- Damage caused by inappropriate finishes, solvents, brickwash or cleaning chemicals.
- Products subjected to conditions outside product design limitations.
- Products with modifications that are not approved by Monarch.
- Products that have not been paid for in full.
- The installation of any window without a window well around the window or a window installed with a window well in which the top of the window frame placement is eight (8) inches or higher above grade level.
- Damage resulting in whole or in part from installation inconsistent with Monarch installation instructions.
- Altered or reinstalled products.

7. REGISTRATION

Monarch recommends that the Original Owner register its Monarch products to help ensure limited warranty benefits. You can register your Monarch products at www.monmatgrp.com. Registration of your Monarch products does not eliminate the requirement to retain your original purchase documents in order to obtain limited warranty benefits.

LIMITED WARRANTY

MONARCH



8. TRANSFERABILITY

The Limited Warranty is transferable by the Original Purchaser to one subsequent owner. To transfer the Limited Warranty, the Original Purchaser must notify Monarch of the transfer of ownership of the real property within thirty (30) days after the transfer of ownership. Such a transfer does not extend the warranty period of the Limited Warranty for any products. Upon a transfer, the Vinyl Window Lifetime Limited Warranty automatically becomes a Ten-Year (10-Year) Limited Warranty which begins from the date of manufacture by Monarch. Transfer requests under these Limited Warranties must be made in writing to **Monarch, P.O. Box 250, Adel, Iowa 50003**, or by email to the following address: **info@monmatgrp.com**. Transfer requests to Monarch must include the following information:

- Original Purchaser's name, address and phone number and the installation address (if different);
- Subsequent owner's name, address and phone number
- A description of the product, purchase price, and the date and location of purchase, and copies of invoices;
- Product information for the Monarch product label; and
- A certified or cashier's check in the amount of \$30.

9. PROMPT NOTICE OF CLAIM

Within the applicable limited warranty period, Buyer or User shall notify Monarch immediately, and in no case more than one (1) year, after any defect or other basis of a claim covered by this Limited Warranty is discovered or should have been discovered. Any claims otherwise covered by the foregoing warranties, but for which Monarch did not receive notice within one (1) year from the time the problem first became known, shall be barred.

10. LIMITED WARRANTY CLAIM PROCEDURE

Claims under these Limited Warranties must be made in writing to Monarch, P.O. Box 250, Adel, Iowa 50003, or by email to the following address: **info@monmatgrp.com**. Limited Warranty claims to Monarch must include the following information:

- Claimant's name, address and phone number and the installation address (if different);
- A description of the product, purchase price, and the date and location of purchase, and copies of invoices;
- Product information for the Monarch product label;
- A description of the product concerns (photos may be included); and
- A brief summary of attempts made to address the concerns.

11. RESERVATION OF RIGHTS.

Monarch reserves the right to discontinue any of its products or components covered by this Limited Warranty. Any discontinued parts or components may be replaced with an equivalent part at the sole discretion of Monarch. Monarch is not responsible for any color variation in the replacement part or component. Monarch reserves the right to inspect any and

all claimed defects on-site where the product is installed. On-site inspections may result in reasonable service charges if no limited warranty coverage of the Monarch product is found.

12. ALLOCATION OF RISKS OF MONARCH PRODUCT PERFORMANCE

Because all construction must anticipate some water infiltration, it is important that the wall system be designed and constructed to properly manage moisture. Monarch is not responsible for claims or damages caused by anticipated or unanticipated water infiltration; deficiencies in building design, construction and maintenance; failure to install Monarch products in accordance with Monarch Installation Instructions; or the use of Monarch products in barrier wall systems, which do not allow for proper management of moisture within the wall system. The determination of the suitability of all building components, including the use of Monarch products, as well as the design and installation of flashing and sealing systems, is the responsibility of the Original Purchaser, Buyer or User, the architect, contractor, installer or other construction professional and is not the responsibility of Monarch. All risks related to building design and construction, or the maintenance, installation and use of Monarch products shall be assumed by Original Purchaser, Buyer and/or User.

13. ENTIRE AGREEMENT

With the exception of a written statement signed by an authorized Monarch representative, this Limited Warranty and all the terms contained herein constitutes the entire agreement between Monarch/ Seller and Buyer/User. This Limited Warranty, including all Limitations of Liability contained herein, are made a part of any such written agreement, unless expressly excluded therein. By purchasing or using the product covered by this Limited Warranty, Buyer and User agree that they are not relying on any oral statements made by anyone that are in any way contrary to this Limited Warranty.

14. NO AMENDMENT EXCEPT IN WRITING

Monarch and Seller offer this product, and Buyer and User accept it, subject to the foregoing Limited Warranty, which may be modified only by written agreement signed by a duly authorized representative of Monarch.

It is the responsibility of the owner, architect and/or builder to select products that comply with applicable laws and building codes and that are appropriate for the application and use.

Read the Monarch Installation Guides and Maintenance Information for the required installation and maintenance of your Monarch products. All Monarch Owner's Manuals are available on www.monmatgrp.com.



EGRESS CODE

Requirements for Egress Windows

IRC (International Residential Code) pertaining to all single and two-family homes:

The purpose of the code is to keep you and your loved ones safe by requiring an exit path which occupants may use to safely exit a building in basement level living spaces. The reason for needing a means of egress are twofold; to allow for an emergency exit, and to provide access for a firefighter to gain entrance. Each product in this catalog clearly states whether it complies with the egress window requirements.

Overview of section R310 of the code, applicable to Egress Windows:

Egress windows (or doors) are required in every habitable space. Any room used for sleeping purposes, requires its own egress window. Without a means of egress, these rooms can become a dangerous fire trap. A quick and easy way to operate the emergency egress escape window is required. This applies to basements that have a bedroom, recreation room, den, family room, media room, office, or home gym. All of these rooms are required to have a means of egress.

Requirements: Basement Egress Windows

- Bottom of the egress window opening not to exceed 44" from the finished floor.
- Minimum opening area of the egress window is 5.7 square feet.
- Minimum egress window opening is 24" high by 20" wide.
- Egress window must have a glass area no less than 8% of the total floor area of room(s) for which it is servicing, to allow the minimum amount of sufficient natural light.
- Egress window must have an opening area no less than 4% of the total floor area of room(s) for which it is servicing, to allow the minimum amount of natural ventilation.

Egress Window Wells

- Egress window wells are required when the bottom of the egress window is below ground level.
- The egress well must not interfere with the egress window opening fully.
- The distance from the egress window to the back of the egress well must be at least 36"
- The minimum area of the egress well must be 9 square feet. (width x projection)

Egress Well Coves and/or Grates

- Must be easily opened or removed from the inside of the egress well without use of a key or tool.

Egress Ladders and/or Steps

- Egress ladders and or steps are required on window wells deeper than 44" and must be permanently affixed.
- An egress ladder or step may encroach into well up to 6".
- Steps and/or distance between rungs of the ladder cannot to exceed 18".
- The rungs of an egress ladder must be 12" wide or greater and must project a minimum of 3" away from the back wall, but can't exceed 6" from the back of the wall.

Check with your local building department to determine what version of this code is being enforced in your area.



EGRESS CODE

Building Planning Codes

IRC Code Section R310

EGRESS CODE

International Residential Code™ (IRC-2015)

Egress/Rescue Openings Code Requirements

For One- and Two-Family Dwellings

R310.1 EMERGENCY ESCAPE AND RESCUE OPENING REQUIRED.

Basements, habitable attics and every sleeping room shall have not less than one operable emergency escape and rescue opening. Where basements contain one or more sleeping rooms, an emergency escape and rescue opening shall be required in each sleeping room. Emergency escape and rescue openings shall open directly into a public way, or to a yard or court that opens to a public way.

Exception: Storm shelters and basements used only to house mechanical equipment not exceeding a total floor Area of 200 square feet (18.58m²)

R310.1.1 OPERATIONAL CONSTRAINTS AND OPENING CONTROL DEVICES.

Emergency escape and rescue openings all be operational from the inside of the room without the use of keys, tools or special knowledge. Window opening control devices complying with ASTM F 2090 shall be permitted for use on windows serving as a required emergency escape and rescue opening.

R310.2 EMERGENCY ESCAPE AND RESCUE OPENINGS.

Emergency escape and rescue openings shall have minimum dimensions as specified in this section.

R310.2.1 MINIMUM OPENING AREA.

Emergency and escape rescue openings shall have a net clear opening of not less than 5.7 square feet (0.530 m²). The net clear opening dimensions required by this section shall be obtained by the normal operation of the emergency escape and rescue opening from the inside. The net clear height opening shall be not less than 24 inches (610 mm) and the net clear width shall be not less than 20 inches (508 mm).

Exception: Grade floor or below grade openings shall have a net clear opening of not less than 5 square feet (0.465 m²)

R310.2.2 WINDOW SILL HEIGHT.

Where a window is provided as the emergency escape and rescue opening, it shall have a sill height of not more than 44 inches (1118 mm) above the floor; where the sill height is below grade, it shall be provided with a window well in accordance with Section R310.2.3



EGRESS CODE

R310.2.3 WINDOW WELLS.

The horizontal area of the window well shall be not less than 9 square feet (0.9 m²), with a horizontal projection and width of not less than 36 inches (914 mm). The area of the window well shall allow the emergency escape and rescue opening to be fully opened.

Exception: The ladder or steps required by Section R310.2.3.1 shall be permitted to encroach not more than 6 inches (152 mm) into the required dimensions of the window well.

R310.2.3.1 LADDER AND STEPS.

Window wells with a vertical depth greater than 44 inches (1118 mm) shall be equipped with a permanently affixed ladder or steps usable with the window in the fully open position. Ladders or steps required by this section shall not be required to comply with Sections R311.7 and R311.8, Ladders or rungs shall have an inside width of not less than 12 inches (305 mm), shall project not less than 3 inches (76 mm) from the wall and shall be spaced not more than 18 inches (457 mm) on center vertically for the full height of the window well.

R310.2.3.2 DRAINAGE.

Window wells shall be designed for proper drainage by connecting to the building's foundation drainage system required by Section R405.1 or by an approved alternative method.

Exception: A drainage system for window wells is not required where the foundation is on well-drained soil or sand-gravel mixture soils in accordance with the United Soil Classification System, Group I Soils, as detailed in Table R405.1.

R310.2.4 EMERGENCY ESCAPE AND RESCUE OPENINGS UNDER DECKS AND PORCHES.

Emergency escape and rescue openings shall be permitted to be installed under decks and porches provided that the location of the deck allows the emergency escape and rescue openings to be fully opened and provides a path not less than 35 inches (914 mm) in height to a yard or court.

R310.3 EMERGENCY ESCAPE AND RESCUE DOORS.

Where a door is provided as the required emergency escape and rescue opening, it shall be permitted to be a side-hinged door or a slider. Where the opening is below the adjacent ground elevation, it shall be provided with a bulkhead enclosure.

R310.3.1 BULKHEAD ENCLOSURES.

Bulkhead enclosures shall provide direct access from the basement. The bulkhead enclosure shall provide the minimum net clear opening equal to the door in the fully open position.

R310.3.2.1 DRAINAGE.

Bulkhead enclosures shall be designed for proper drainage by connecting to the building's foundation drainage system required by Section R405.1 or by an approved alternative method.

Exception: A drainage system for bulkhead enclosures is not required where the foundation is on well-drained soil or sand-gravel mixture soils in accordance with the United Soil Classification System, Group I Soils, as detailed in Table R405.1.



EGRESS CODE

R310.4 BARS, GRILLES, COVERS AND SCREENS.

Bars, grilles, covers, screen or similar devices are permitted to be placed over emergency escape and rescue openings, bulkhead enclosures, or window wells that serve such openings, provided that the minimum net clear opening size complies with Sections R310.1.1 to R310.2.3, and such devices shall be releasable or removable from the inside without the use of a key, tool, special knowledge or force greater than that required for the normal operation of the escape and rescue opening.

R310.5 DWELLING ADDITIONS.

Where dwelling additions occur that contain sleeping rooms, an emergency escape and rescue opening shall be provided in each new sleeping room. Where dwelling additions occur that have basements, an emergency escape and rescue opening shall be provided in the new basement.

EXCEPTIONS:

1. An emergency escape and rescue opening is not required in a new basement that contains sleeping room with an emergency escape and rescue opening.
2. An emergency escape and rescue opening is not required in a new basement where there is an emergency escape and rescue opening in an existing basement that is accessible from the new basement.

R310.6 ALTERATIONS OR REPAIRS OF EXISTING BASEMENTS.

An emergency escape and rescue opening is not required where existing basements undergo alterations or repairs.

Exception: New sleeping rooms created in an existing basement shall be provided with emergency escape and rescue openings in accordance with Section R310.1.

SECTION R303 LIGHT, VENTILATION, AND HEATING

R303.1 HABITABLE ROOMS

Habitable rooms shall have an aggregate glazing area of not less than 8 percent of the floor area of such rooms. Natural ventilation shall be through windows, skylights, doors, louvers or other approved openings to the outdoor air. Such openings shall be provided with ready access or shall otherwise be readily controllable by the building occupants. The openable area to the outdoors shall be not less than 4 percent of the floor area being ventilated.

EXCEPTIONS:

1. The glazed areas need not be openable where the opening is not required by the Section R310 and a whole- house mechanical ventilation system is installed and in accordance with Section M1507.
2. The glazed areas need not be installed in rooms where Exception 1 is satisfied and artificial light is provided that is capable of producing an average illumination of 6 footcandles (65 lux) over the area of the room at a height of 30 inches (762 mm) above the floor level.
3. Use of sunroom and patio covers, as defined in Section R202, shall be permitted for natural ventilation if in excess of 40 percent of the exterior sunroom walls are open, or are enclosed only by insect screening.



CAST IN PLACE VINYL - WINDOWS

VINYL - PREMIER V[®]



Premier V[®] - Cast In Place Vinyl Buck and Sash Slider Unit

Available in Picture Window and Bucko sizes
Great looks and energy efficiency meet ease of installation

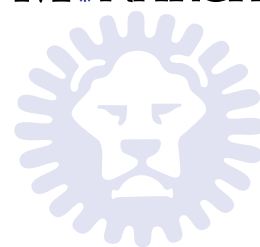
- Both sashes removable and fully weather stripped
- Great retro-fit window
- Sloped sill
- Brass rollers for smooth operation
- Frames sizes available 7½", 8", 9", 9½", 10" 12"- Brick on Brick, Nominal and Full Wall widths
- Unique tie slot mounting system built into the window frame
- Durable cam type locking system. (Picture Window has dual locks to prevent forced entry)
- Removable, protective sill cover standard on all picture window sizes

INSULATED GLAZING CHOICES:

Clear
Low E
Low E & Argon Filled

CUSTOM ORDER OPTIONS:

Obscure Glass
Tempered Glass
i89 LoE Double Glazed & Argon Filled Glass



Vinyl Slider Picture Window Sizes Premier V®



Bracing required
with all picture windows

PART NUMBERS			CALL OUT SIZE	OVERALL DIMENSIONS	SASH DIMENSIONS	DESCRIPTION	SHIP WT. (LBS)
LOW E ARGON	LOW E	CLEAR					
7 1/2" WALL - WHITE							
70192	70583	70114	4040	48 5/16 X 46 1/2	23 3/8 X 42	FRAME & DG SLIDER	121
8" WALL - WHITE							
70193	70584	70115	4040	48 5/16 X 46 1/2	23 3/8 X 42	FRAME & DG SLIDER	122
9 1/2" WALL - WHITE							
70195	70586	70117	4040	48 5/16 X 46 1/2	23 3/8 X 42	FRAME & DG SLIDER	125
10" WALL - WHITE							
70196	70587	70118	4040	48 5/16 X 46 1/2	23 3/8 X 42	FRAME & DG SLIDER	136
12' WALL - WHITE							
70197	70588	70119	4040	48 5/16 X 46 1/2	23 3/8 X 42	FRAME & DG SLIDER	136
*Other sizes available by request							

Pallet Quantities: 7 1/2", 8", 9 1/2" wall - 10 units per pallet, 10" and 12" wall - 8 units per pallet



Vinyl Slider Bucko Window Sizes Premier V®



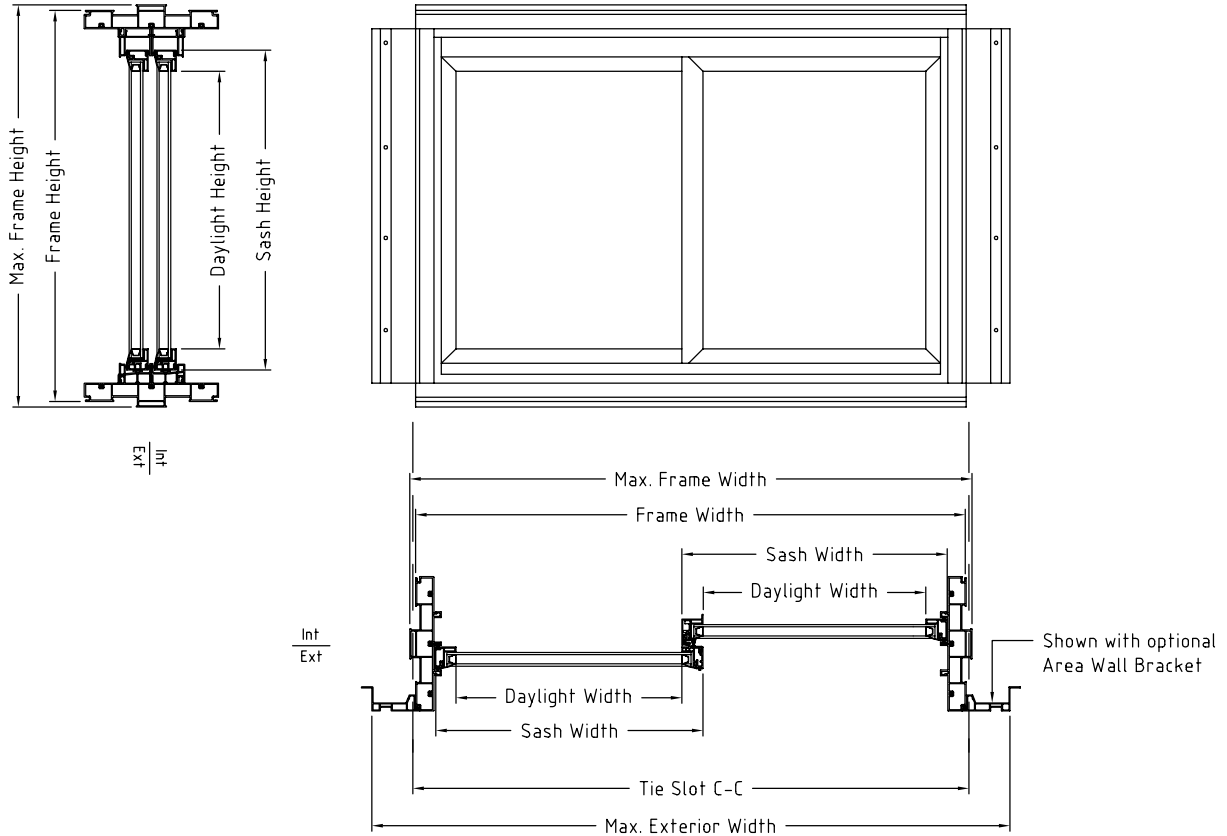
Unit shipped as shown
- with bracing, sash installed, and polywrapped

PART NUMBERS							
LOW E ARGON	LOW E	CLEAR	CALL OUT SIZE	OVERALL DIMENSIONS	SASH DIMENSIONS	DESCRIPTION	SHIP WT. (LBS)
7 1/2" WALL - WHITE							
70132	70526	70054	3012	30 5/16 X 13	14 3/8 X 8 1/2	FRAME & DG SLIDER	28
70138	70532	70060	3016	30 5/16 X 16	14 3/8 X 11 1/2	FRAME & DG SLIDER	31
70144	70538	70066	3020	30 5/16 X 20	14 3/8 X 15 1/2	FRAME & DG SLIDER	35
70150	70544	70072	3024	30 5/16 X 24	14 3/8 X 19 1/2	FRAME & DG SLIDER	39
8" WALL - WHITE							
70133	70527	70055	3012	30 5/16 X 13	14 3/8 X 8 1/2	FRAME & DG SLIDER	28
70139	70533	70061	3016	30 5/16 X 16	14 3/8 X 11 1/2	FRAME & DG SLIDER	31
70145	70539	70067	3020	30 5/16 X 20	14 3/8 X 15 1/2	FRAME & DG SLIDER	35
70151	70545	70073	3024	30 5/16 X 24	14 3/8 X 19 1/2	FRAME & DG SLIDER	39
9 1/2" WALL - WHITE							
70135	70529	70057	3012	30 5/16 X 13	14 3/8 X 8 1/2	FRAME & DG SLIDER	29
70141	70535	70063	3016	30 5/16 X 16	14 3/8 X 11 1/2	FRAME & DG SLIDER	32
70147	70541	70069	3020	30 5/16 X 20	14 3/8 X 15 1/2	FRAME & DG SLIDER	36
70153	70547	70075	3024	30 5/16 X 24	14 3/8 X 19 1/2	FRAME & DG SLIDER	40
10" WALL - WHITE							
70136	70530	70058	3012	30 5/16 X 13	14 3/8 X 8 1/2	FRAME & DG SLIDER	29
70142	70536	70064	3016	30 5/16 X 16	14 3/8 X 11 1/2	FRAME & DG SLIDER	32
70148	70542	70070	3020	30 5/16 X 20	14 3/8 X 15 1/2	FRAME & DG SLIDER	36
70154	70548	70076	3024	30 5/16 X 24	14 3/8 X 19 1/2	FRAME & DG SLIDER	40
12" WALL - WHITE							
70137	70531	70059	3012	30 5/16 X 13	14 3/8 X 8 1/2	FRAME & DG SLIDER	29
70143	70537	70065	3016	30 5/16 X 16	14 3/8 X 11 1/2	FRAME & DG SLIDER	32
70149	70543	70071	3020	30 5/16 X 20	14 3/8 X 15 1/2	FRAME & DG SLIDER	36
70155	70549	70077	3024	30 5/16 X 24	14 3/8 X 19 1/2	FRAME & DG SLIDER	40

Pallet Quantities: 3012 & 3016 - 26 units per pallet, 3020 & 3024 - 21 units per pallet



Spec Sheet - Picture and Bucko Window Sizes



VINYL WINDOW - PREMIER V®														
CALLOUT	FRAME		MAX. FRAME		MAX. EXT.	SASH		DAYLIGHT			VENT OPENING			TIE SLOT
	Width	Height	Width	Height	Width	Width	Height	Width	Height	Area (ft ²)	Width	Height	Area (ft ²)	C-C
3012	29 11/16	12 3/8	30 5/16	12 3/4	34 1/2	14 3/8	8 1/2	12 1/16	6 3/16	0.5	11 3/4	7 3/4	0.6	30
3016	29 11/16	15 3/8	30 5/16	15 3/4	34 1/2	14 3/8	11 1/2	12 1/16	9 3/16	0.8	11 3/4	10 3/4	0.9	30
3020	29 11/16	19 3/8	30 5/16	19 3/4	34 1/2	14 3/8	15 1/2	12 1/16	13 3/16	1.1	11 3/4	14 3/4	1.2	30
3024	29 11/16	23 3/8	30 5/16	23 3/4	34 1/2	14 3/8	19 1/2	12 1/16	17 3/16	1.4	11 3/4	18 3/4	1.5	30
4040	47 11/16	45 7/8	48 5/16	46 1/2	52 1/2	23 3/8	42	21 1/16	39 11/16	5.8	20 3/4	41 1/4	5.9*	48



Vinyl Hopper Premier V®

- Two durable cam type locks
- Fusion welded bulb weather-stripping around sash
- Stop mechanism allows window to hinge inward and ventilate
- Sash is easily removed for cleaning
- 5/8" Insulated Low E/Argon or Clear Glass



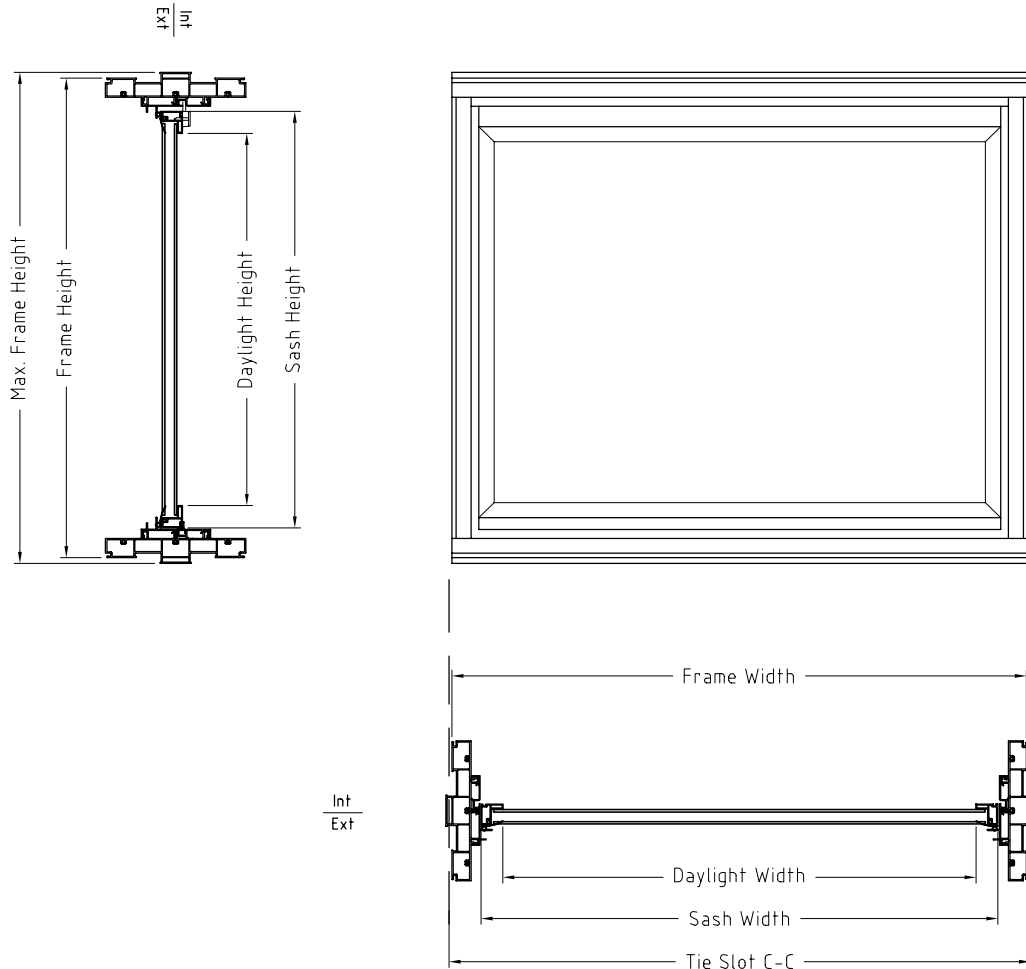
PART NUMBERS		CALL OUT SIZE	OVERALL DIMENSIONS	SASH DIMENSIONS	DESCRIPTION	SHIP WT. (LBS)
LOW E ARGON	CLEAR					
7 1/2" WALL						
70442	70441	3216	31 11/16 x 15 3/8	28 5/8 X 12	VINYL HOPPER	32
70452	70449	3220	31 11/16 x 19 3/8	28 5/8 X 16	VINYL HOPPER	35
8" WALL						
70444	70443	3216	31 11/16 x 15 3/8	28 5/8 X 12	VINYL HOPPER	32
70454	70451	3220	31 11/16 x 19 3/8	28 5/8 X 16	VINYL HOPPER	35
9 1/2" WALL						
70446	70445	3216	31 11/16 x 15 3/8	28 5/8 X 12	VINYL HOPPER	33
70456	70453	3220	31 11/16 x 19 3/8	28 5/8 X 16	VINYL HOPPER	36
10" WALL						
70448	70447	3216	31 11/16 x 15 3/8	28 5/8 X 12	VINYL HOPPER	33
70464	70455	3220	31 11/16 x 19 3/8	28 5/8 X 16	VINYL HOPPER	36
12" WALL						
70474	70466	3216	31 11/16 x 15 3/8	28 5/8 X 12	VINYL HOPPER	33
70475	70467	3220	31 11/16 x 19 3/8	28 5/8 X 16	VINYL HOPPER	36

Pallet Quantities: 3216 - 26 units per pallet, 3220 - 21 units per pallet





Spec Sheet - Vinyl Hopper Series - Premier V®



HOPPER WINDOW - PREMIER V®													
CALL OUT	FRAME		MAX. FRAME		SASH		DAYLIGHT			VENT OPENING			TIE SLOT
	Width	Height	Width	Height	Width	Height	Width	Height	Area (ft2)	Width	Height	Area (ft2)	C-C
3216	31 11/16	15 3/8	32 5/16	15 3/4	28 5/8	12	26 3/8	1.8	1.8	27 1/2	11 1/4	2.1	32
3220	31 11/16	19 3/8	32 5/16	19 3/4	28 5/8	16	26 3/8	2.5	2.5	27 1/2	15 1/4	2.9	32



CAST IN PLACE STEEL – WINDOWS

KNOCK DOWN (KD)

Knock Down (KD) Picture Window Frame

Reduce Freight Costs

Reduce Storage Needed with KD

Unique Snap Lock Tabs-Tightest Fit in the Industry

- Designed to work with the Vinyl Pro 4™ Slider window.
- Heavy gauge steel provides outstanding strength
- Sloped sill
- Pre-punched nail holes for rapid installation in wood forms. Tie slots are standard for easy handing on aluminum forms. Bolts applied for window well mounting, (standard).
- Available in sizes from 4040 to 5050. Available in 7 ½", 8", 9", 9 ½" and 10" widths.

Custom sizes available under Custom & Specialized tab.
Galvanized finish sizes are under Pricing tab.





CAST IN PLACE STEEL – WINDOWS

KNOCK DOWN (KD)

Knock Down (KD) Picture Window Frame

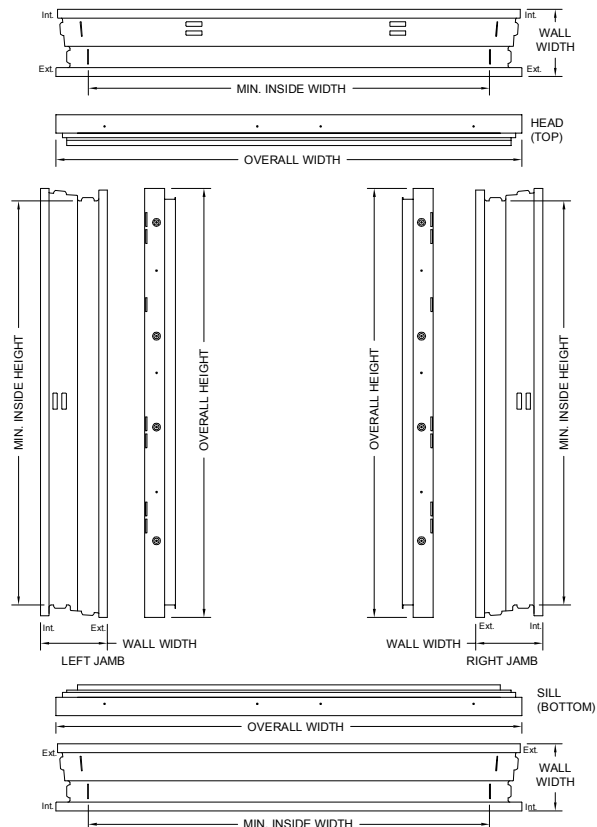
	PART NUMBERS			CALL OUT SIZE	SASH DIMENSIONS	DESCRIPTION	SHIP WT. (LBS)
	WHITE	GRAY	GALVANIZED				
	8" WALL						
EGRESS	40061	40035	40111	4040	54 3/8 X 54 3/8	KD STEEL FRAME	40
	40066	40034	40116	4050	54 3/8 X 66 3/8	KD STEEL FRAME	43
	40076	40033	40126	5050	66 3/8 X 66 3/8	KD STEEL FRAME	44
9" WALL							
EGRESS	40062	40032	40112	4040	54 3/8 X 54 3/8	KD STEEL FRAME	42
	40067	40031	40117	4050	54 3/8 X 66 3/8	KD STEEL FRAME	48
	40077	40030	40127	5050	66 3/8 X 66 3/8	KD STEEL FRAME	57
9 1/2" WALL							
EGRESS	40063	40029	40113	4040	54 3/8 X 54 3/8	KD STEEL FRAME	47
	40068	40024	40118	4050	54 3/8 X 66 3/8	KD STEEL FRAME	55
	40078	40028	40128	5050	66 3/8 X 66 3/8	KD STEEL FRAME	64
10" WALL							
EGRESS	40064	40027	40114	4040	54 3/8 X 54 3/8	KD STEEL FRAME	57
	40069	40026	40119	4050	54 3/8 X 66 3/8	KD STEEL FRAME	63
	40079	40025	40129	5050	66 3/8 X 66 3/8	KD STEEL FRAME	70



CAST IN PLACE STEEL – WINDOWS

KNOCK DOWN (KD)

Spec Sheet - Knock Down (KD) Picture Window Frame



KD FRAME – UNIT SIZING				
CALL OUT	MINIMUM INSIDE		OVERALL PART	
	WIDTH	HEIGHT	WIDTH	HEIGHT
4040	47 1/8	47 1/2	54 3/4	50 1/4
5040	59 1/8	47 1/2	66 3/4	50 1/4
5050	59 1/8	59 1/2	66 3/4	62 1/4



CAST IN PLACE STEEL – WINDOWS

WELDED PICTURE WINDOW FRAME

Welded Picture Window Frame

- Designed to work with the Vinyl Pro 4™ Slider window.
- Welded frame for maximum structural strength and rigidity
- Heavy gauge steel provides outstanding strength
- Sloped sill
- Pre-punched nail holes for rapid installation in wood forms. Tie slots are standard for easy handing on aluminum forms. Bolts applied for window well mounting, (standard).



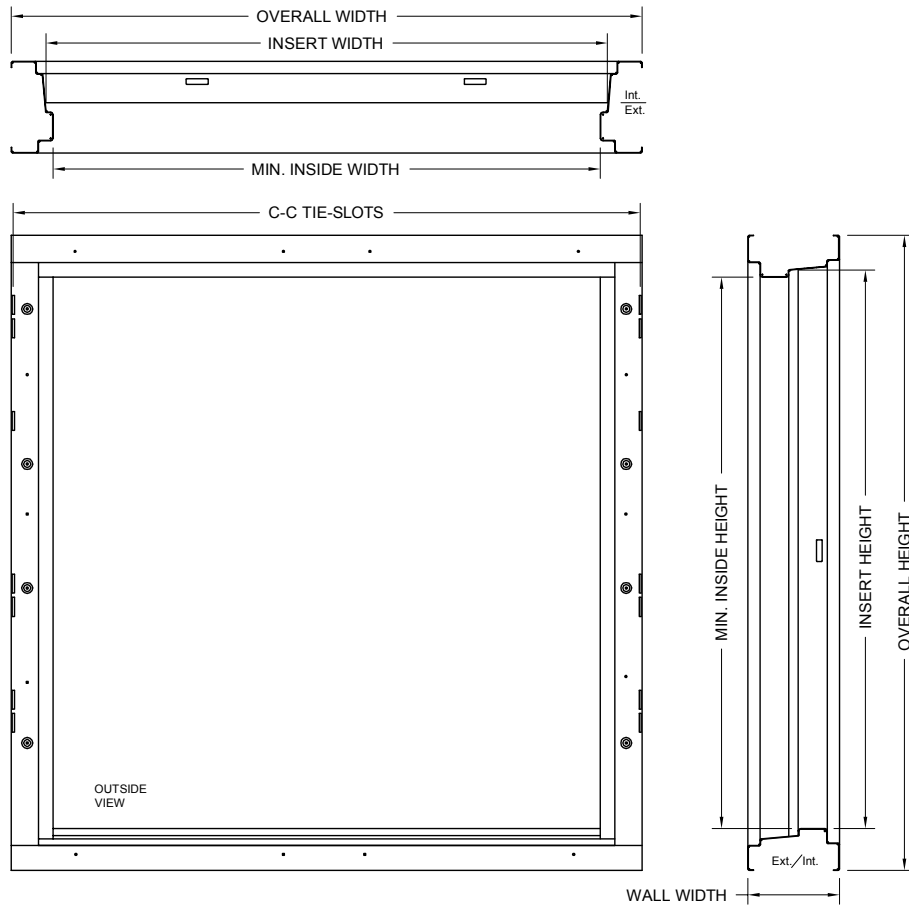
PART NUMBERS		CALL OUT SIZE	OVERALL DIMENSIONS	DESCRIPTION	SHIP WT. (LBS)	
WHITE	GALVANIZED					
EGRESS	8" WALL					
	98031R	97793R	2630	36 3/8 X 42 3/4	PW STEEL FRAME	28
	98032R	97787R	3036	42 3/8 X 48 3/4	PW STEEL FRAME	32
	97989R	97736R	4040	54 3/8 X 54 3/8	PW STEEL FRAME	40
	98024R	97673R	4050	54 3/8 X 66 3/8	PW STEEL FRAME	43
	98023R	97685R	5050	66 3/8 X 66 3/8	PW STEEL FRAME	48
	10" WALL					
	98036R	97795R	2630	36 3/8 X 42 3/4	PW STEEL FRAME	41
	98039R	97789R	3036	42 3/8 X 48 3/4	PW STEEL FRAME	48
EGRESS	98009R	97764R	4040	54 3/8 X 54 3/8	PW STEEL FRAME	57
	98042R	97676R	4050	54 3/8 X 66 3/8	PW STEEL FRAME	63
	98044R	97687R	5050	66 3/8 X 66 3/8	PW STEEL FRAME	70

*Other sizes available by request

WELDED PICTURE WINDOW FRAME



Spec Sheet - Steel Picture Window Frames



PICTURE WINDOW – UNIT SIZING							
CALL OUT	OUTSIDE		TIE SLOT	INSERT		MINIMUM INSIDE	
	WIDTH	HEIGHT	WIDTH	WIDTH	HEIGHT	WIDTH	HEIGHT
2630	36 3/8	42 3/4	36	30 3/8	36 3/32	29 1/8	35 1/2
3036	42 3/8	48 3/4	42	36 3/8	42 3/32	35 1/8	41 1/2
4040	54 3/8	54 3/4	54	48 3/8	48 3/32	47 1/8	47 1/2
5040	66 3/8	54 3/4	66	60 3/8	48 3/32	59 1/8	47 1/2
5050	66 3/8	66 3/8	66	60 3/8	60 3/32	59 1/8	59 1/2



Single Slider Insert

- Best “U” Value in the Industry
- Exterior tabs easily secure the window into the steel buck from the interior of the home and ensures tight fit
- Dual cam type locking system. (Picture Window has a dual lock system to prevent forced entry)
- Main frame design provides superior water drainage
- Multi-chambered frame for structural strength and energy efficiency
- Operating sash with lift-out feature provides for easy cleaning
- Energy savings 5/8” insulated glass (standard)
- Fusion welded main frame and sash provides maximum rigidity, durability, and watertight corners



INSULATED GLAZING CHOICES:

Clear

Low E & Argon Filled

CUSTOM ORDER OPTIONS:

Obscure Glass

Tempered Glass

i89 LoE Double Glazed & Argon Filled Glass



CAST IN PLACE STEEL – WINDOWS

VINYL PRO 4™

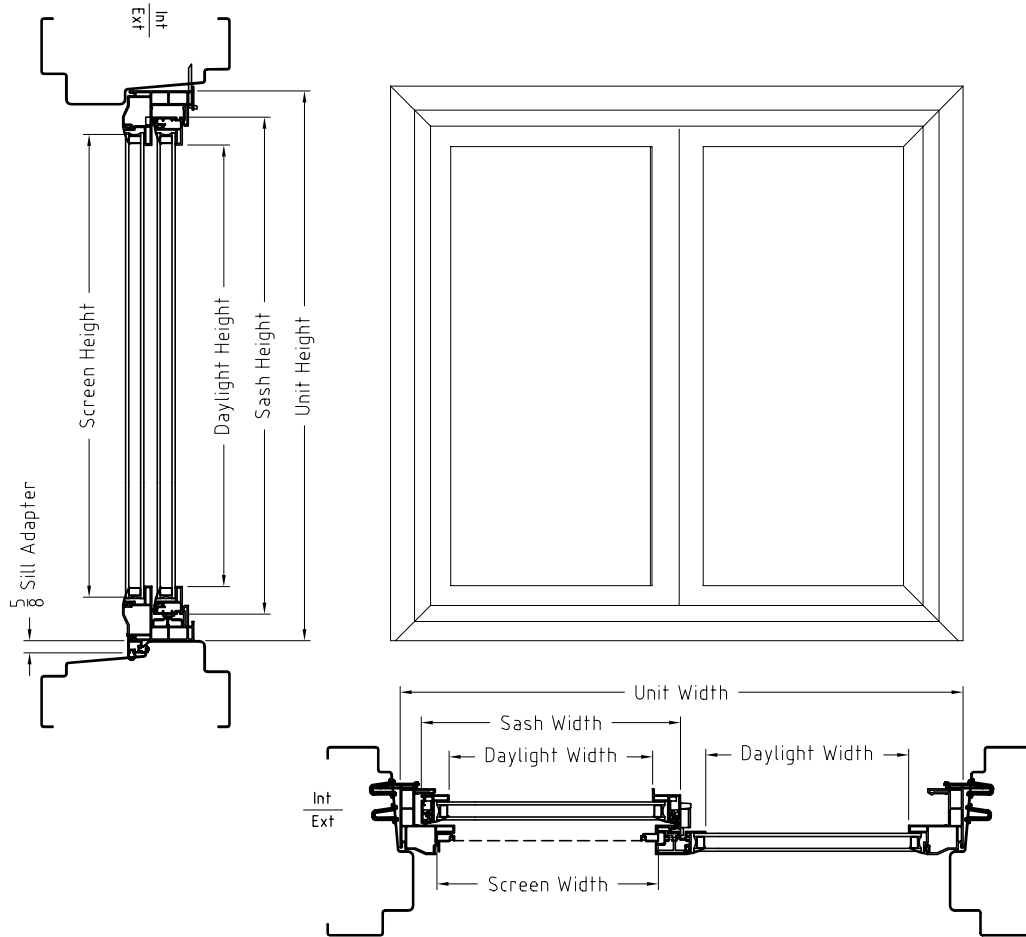
Single Slider Insert Picture Window



	PART NUMBERS		CALL OUT SIZE	OVERALL DIMENSIONS	SASH DIMENSIONS	DESCRIPTION	SHIP WT. (LBS)					
	LOW E ARGON	CLEAR										
	VINYL PRO 4 - WHITE											
	87041	87001						2630	30 1/4 X 36	14 3/16 X 33 3/4	TWO LITE SLIDER	30
	87043	87003						3030	36 1/4 X 36	17 3/16 X 33 3/4	TWO LITE SLIDER	35
	87044	87004						3036	36 1/4 X 42	17 3/16 X 39 3/4	TWO LITE SLIDER	38
	87047	87007						4040	48 1/4 X 48	23 3/16 X 45 3/4	TWO LITE SLIDER	60
EGRESS	87048	87008	4050	48 1/4 X 60	23 3/16 X 57 3/4	TWO LITE SLIDER	75					
	87049	87009	5040	60 1/4 X 48	29 3/16 X 45 3/4	TWO LITE SLIDER	75					

VINYL PRO 4™

Spec Sheet - Single Slider Insert Picture Window



VINYL PRO 4™												
CALL OUT	UNIT		SASH		DAYLIGHT			SCREEN		VENT OPENING		
	Width	Height	Width	Height	Width	Height	Area (ft2)	Width	Height	Width	Height	Area (ft2)
2630	30 1/4	36	14 3/16	33 3/4	11 7/8	31 3/8	2.59	12 5/8	32 5/8	11 1/8	31 7/16	2.43
3030	36 1/4	36	17 3/16	33 3/4	14 7/8	31 3/8	3.24	15 5/8	32 5/8	14 1/8	31 7/16	3.08
3036	36 1/4	42	17 3/16	39 3/4	14 7/8	37 3/8	3.86	15 5/8	38 5/8	14 1/8	37 7/16	3.67
EGRESS	4040	48 1/4	23 3/16	45 3/4	20 7/8	43 3/8	6.29	21 5/8	44 5/8	20 1/8	43 7/16	6.07
	4050	48 1/4	23 3/16	57 3/4	20 7/8	55 3/8	8.03	21 5/8	56 5/8	20 1/8	55 7/16	7.75
	5040	60 1/4	29 3/16	45 3/4	26 7/8	43 3/8	8.10	27 5/8	44 5/8	26 1/8	43 7/16	7.88



CAST IN PLACE STEEL – WINDOWS

VINYL CASEMENT

Vinyl Casement Frame & Insert

- For use with Monarch Cast in Place Steel Frame Only
- Fully welded sash and frame
- 3-1/4" multi-chambered frame
- U-PVC (unplasticized poly vinyl chloride) compound for frame and sash
- Unique dual glazing wedge system
- Multi-point lock with single lever
- Low E/Argon glass
- Available only for 8" wall thickness



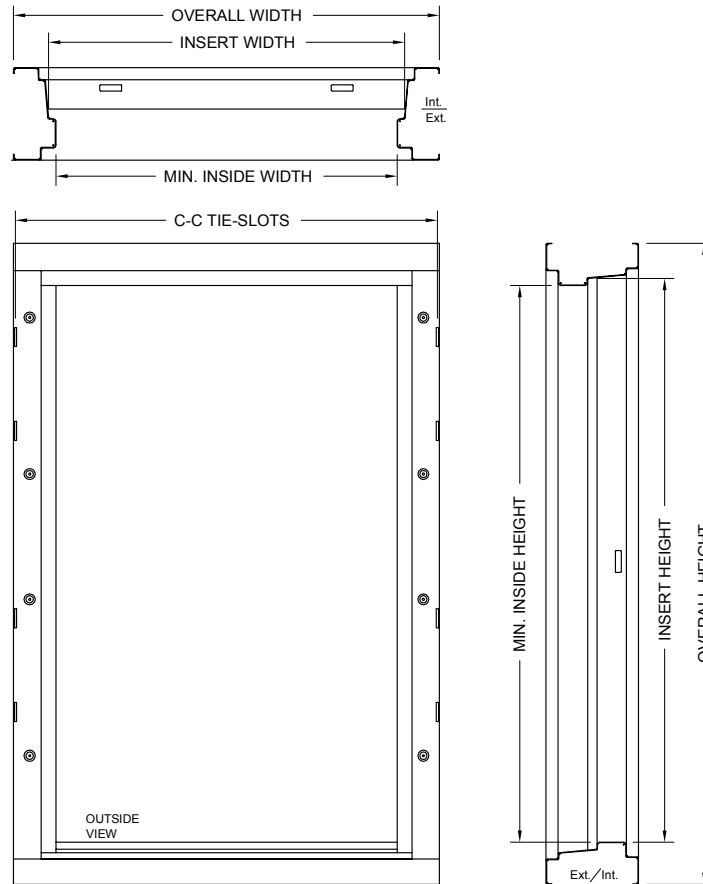
PART NUMBERS				
WHITE	CALL OUT SIZE	OVERALL DIMENSIONS	DESCRIPTION	SHIP WT. (LBS)
FRAMES				
99201R	2640	36 3/8 X 54	STEEL FRAME	39.5
99210R	4040	54 3/8 X 54	STEEL FRAME	39.5
CASEMENT INSERTS				
99400	2640	30 1/4 X 48	CASEMENT/OPERATING	40
99412	4040	48 1/4 X 48	CASEMENT/OPERATING & STAT PANEL	55



CAST IN PLACE STEEL – WINDOWS

VINYL CASEMENT

Spec Sheet - Steel Frame for Vinyl Casement Insert



STEEL FRAME SIZING

CALL OUT	VINYL FRAME		TIE SLOTS	FRAME SIZE		MINIMUM INSIDE	
	Width	Height	Width	Width	Height	Width	Height
2640	30 1/4	48	36	30 1/4	48	29 1/8	47 1/2
4040	48 1/4	48	54	48	48	47 1/8	47 1/2



CAST IN PLACE STEEL – WINDOWS

VINYL CASEMENT

Vinyl Casement with Nail Fin

For retro-fit and new construction applications without frame

- 3-1/4" Multi-Chambered Frame for superior insulating value
- Nesting crank hardware
- Low E/Argon glass
- Multi-point lock with single lever
- Meets Egress with narrowed opening



	PART NUMBERS				
	WHITE	CALL OUT SIZE	OVERALL DIMENSIONS	DESCRIPTION	SHIP WT. (LBS)
	CASEMENT WITH NAIL FIN				
EGRESS	85037	3048	29 1/2 X 47 1/2	CASEMENT - LEFT HAND OPENING	40
	85038	3048	29 1/2 X 47 1/2	CASEMENT - RIGHT HAND OPENING	40

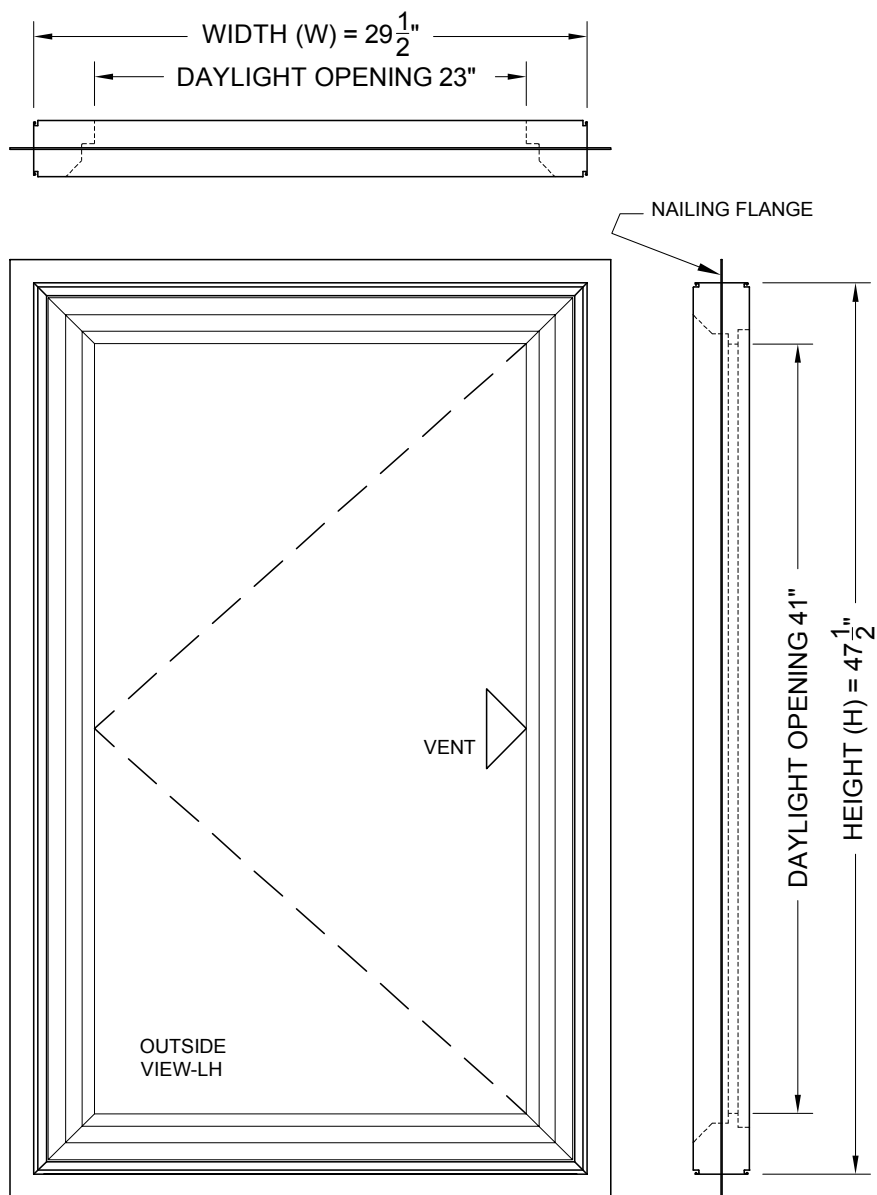


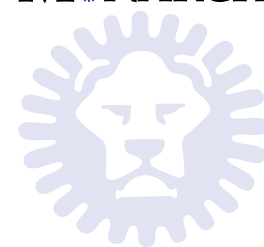
RETRO-FIT & NEW CONSTRUCTION

VINYL CASEMENT

Spec Sheet -

Vinyl Casement with Nail Fin



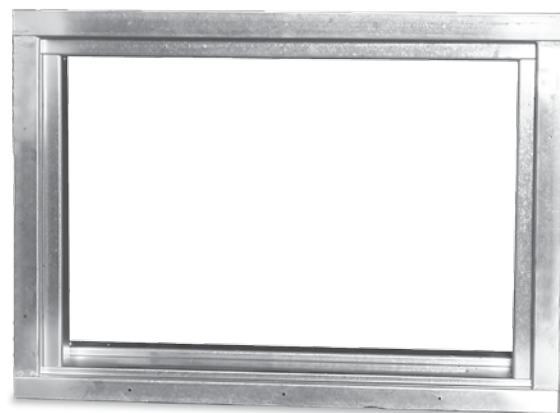


CAST IN PLACE STEEL – WINDOWS

BUCKO WINDOW

Bucko Window Frame

- Welded frame for maximum structural strength and rigidity
- Heavy gauge steel and unitized construction provides outstanding strength
- Available in 12", 16" or 20" heights and from 7 1/2", 8", 9", 9 1/2", and 10" wall thickness
- Designed to work with the Vinyl Pro™ Slider, C-2000™ Aluminum Slider and Aluminum Hopper
- Nail holes allow for easy installation into a wood forming system. Easily clamped into an aluminum framing system



COLOR CHOICES:

Galvanized

Gray

White

OPTIONS:

Hanging Brackets

Bolts applied for window well mounting

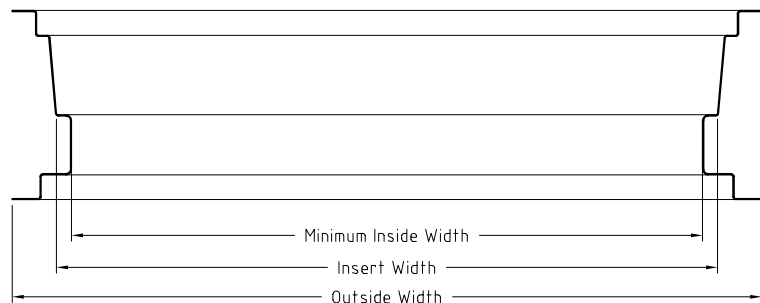
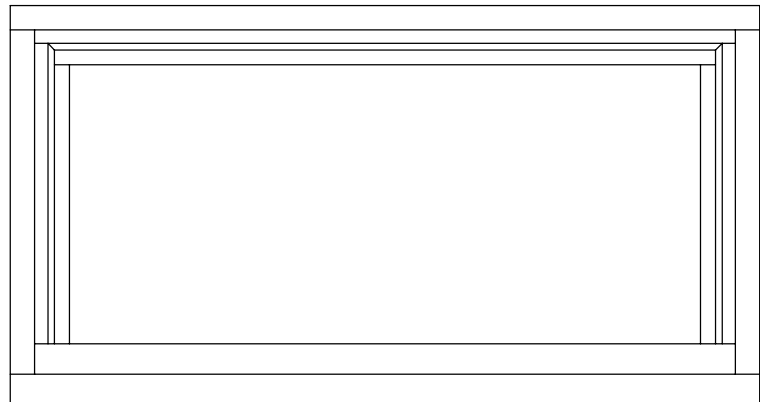
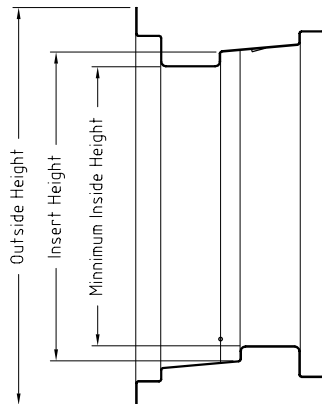
PART NUMBERS			CALL OUT SIZE	OVERALL DIMENSIONS	DESCRIPTION	SHIP WT. (LBS)
GALVANIZED	GRAY	WHITE				
7.5" WALL						
93033R	93034R	93037R	1512	35 1/2 X 16	BUCKO STEEL FRAME	17
97023R	93035R	93038R	1516	35 1/2 X 20	BUCKO STEEL FRAME	19
97025R	93036R	93039R	1520	35 1/2 X 24	BUCKO STEEL FRAME	21
8" WALL						
97027R	93015R	97022R	1512	35 1/2 X 16	BUCKO STEEL FRAME	17
97029R	93016R	97030R	1516	35 1/2 X 20	BUCKO STEEL FRAME	19
97031R	93017R	97024R	1520	35 1/2 X 24	BUCKO STEEL FRAME	21
10" WALL						
97045R	93021R	97032R	1512	35 1/2 X 16	BUCKO STEEL FRAME	20
97047R	93022R	97033R	1516	35 1/2 X 20	BUCKO STEEL FRAME	23
97049R	93023R	97038R	1520	35 1/2 X 24	BUCKO STEEL FRAME	26



CAST IN PLACE STEEL – WINDOWS

BUCKO WINDOW

Spec Sheet - Bucko Window Frames



BUCKO WINDOW – UNIT SIZING						
CALL OUT	OUTSIDE		INSERT		MINIMUM INSIDE	
	WIDTH	HEIGHT	WIDTH	HEIGHT	WIDTH	HEIGHT
1512	35 1/2	15 15/16	30 7/8	12 1/8	29 3/4	11
1516	35 1/2	19 15/16	30 7/8	16 1/8	29 3/4	15
1520	35 1/2	23 15/16	30 7/8	20 1/8	29 3/4	19



Single Slider Insert Bucko Frame

- Tilt-in design to fit the Monarch Bucko Frame Systems.
- Main frame design provides superior water drainage.
- Multi-chambered frame for structural strength and energy efficiency.
- Operating sash with lift-out feature provides for easy cleaning.
- Energy saving 5/8" insulated glass. (standard)
- Heat welded main frame and sash provides maximum rigidity, durability, and watertight corners.



INSULATED GLAZING CHOICES:

Clear

Low E & Argon Filled

Custom order options available under Custom & Specialized tab.

CUSTOM ORDER OPTIONS:

Obscure Glass

Tempered Glass

i89 LoE Double Glazed & Argon Filled Glass

PART NUMBERS		CALL OUT SIZE	OVERALL DIMENSIONS	SASH DIMENSIONS	DESCRIPTION	SHIP WT (LBS)
LOW E ARGON	CLEAR					
VINYL PRO - WHITE						
87220	87200	1512	30 7/8 X 12 1/8	15 X 12	TWO LITE SLIDER	10
87221	87201	1516	30 7/8 X 16 1/8	15 X 16	TWO LITE SLIDER	13
87222	87202	1520	30 7/8 X 20 1/8	15 X 20	TWO LITE SLIDER	15
VINYL PRO - WHITE (NO REVEAL)						
87312	87199	1512	30 7/8 X 12	15 X 12	TWO LITE SLIDER	10
87317	87210	1516	30 7/8 X 16	15 X 16	TWO LITE SLIDER	13
87316	87203	1520	30 7/8 X 20	15 X 20	TWO LITE SLIDER	15

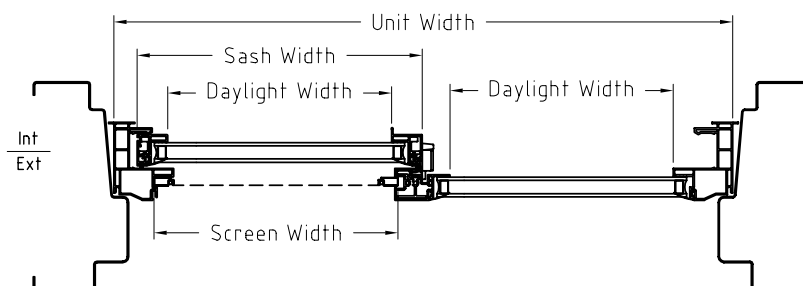
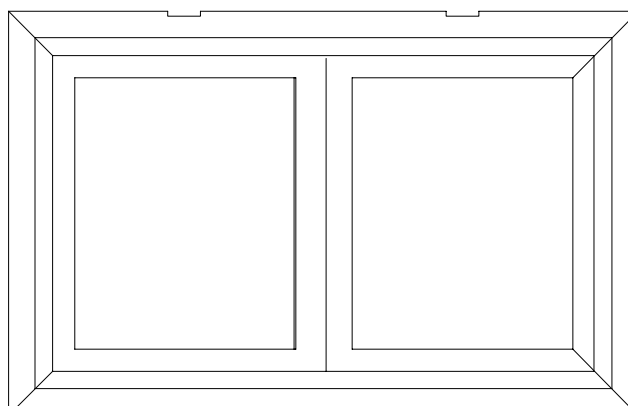
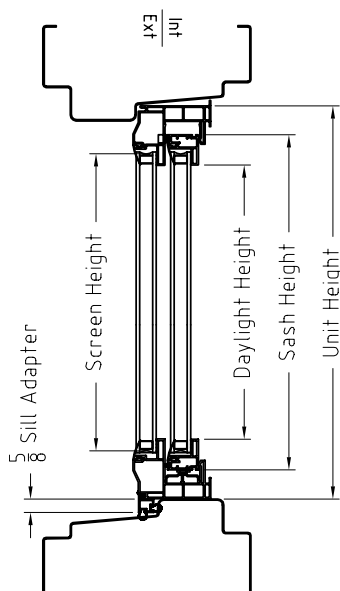


CAST IN PLACE STEEL – WINDOWS

VINYL PRO™

Spec Sheet -

Single Slider Insert Bucko Frame



VINYL PRO™ WINDOW												
CALL OUT	UNIT		SASH		DAYLIGHT			SCREEN		VENT OPENING		
	Width	Height	Width	Height	Width	Height	Area (ft2)	Width	Height	Width	Height	Area (ft2)
1512	30 7/8	12 1/8	14 1/2	9 7/8	12 3/16	7 17/32	0.60	12 15/16	8 3/4	11 7/16	7 19/32	0.60
1516	30 7/8	16 1/8	14 1/2	13 7/8	12 3/16	11 17/32	1.00	12 15/16	12 3/4	11 7/16	11 19/32	0.90
1520	30 7/8	20 1/8	14 1/2	17 7/8	12 3/16	15 17/32	1.30	12 15/16	16 3/4	11 7/16	15 19/32	1.20

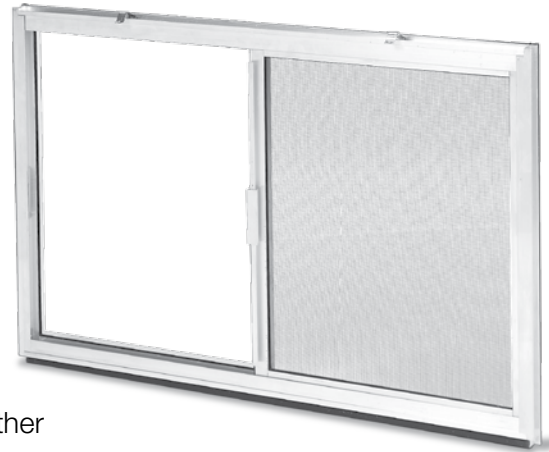


CAST IN PLACE STEEL – WINDOWS

ALUMINUM

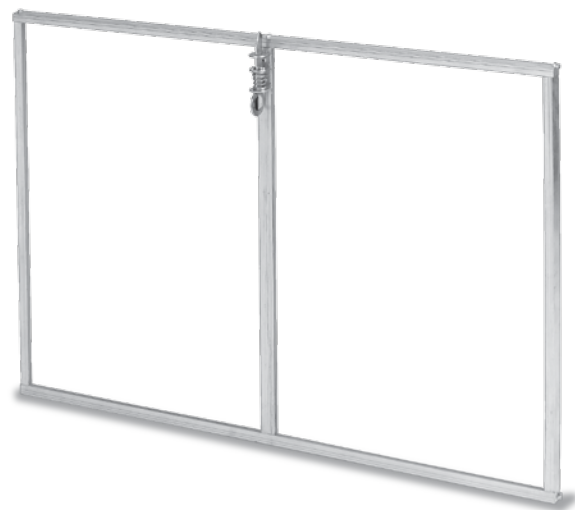
C-2000 Aluminum Slider Insert Bucko Frame Size

- Tilt-in design to fit the Monarch Bucko and Standard Block Frame Systems. Easy inside installation.
- Available in 12", 16" and 20" heights.
- Full perimeter vinyl weather seal system provides outstanding resistance to air and water infiltration.
- Tempered steel spring clips allow inserts to snap into place with a snug fit.
- Weep holes permit excellent water drainage.
- Extra strong frame design with integrated anti-twist corners and outstanding rigidity and weather tightness. Single glazing is standard.
- Mill finish is standard.



Aluminum Hopper Insert

- Tilt-in design to fit the Monarch Bucko and Standard Block Frame Systems. Easy inside installation.
- Spring-loaded locking latch for a secure, tight fit.
- Totally reglazeable with a rigid, vinyl, snap-in glazing bead.
- Mill finish is standard.

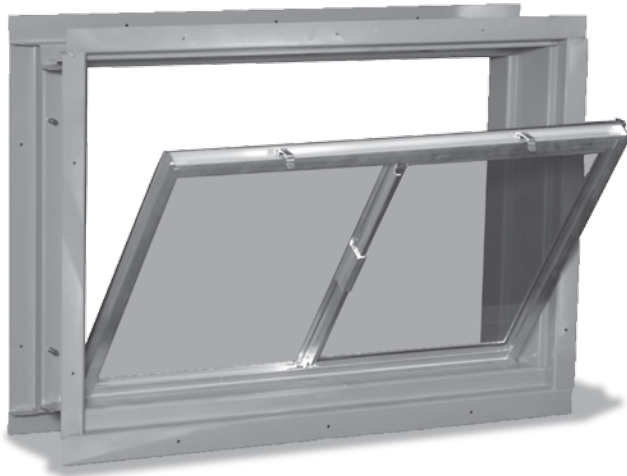




CAST IN PLACE STEEL – WINDOWS

BUCKO INSERTS

Bucko Aluminum Window Frame Inserts



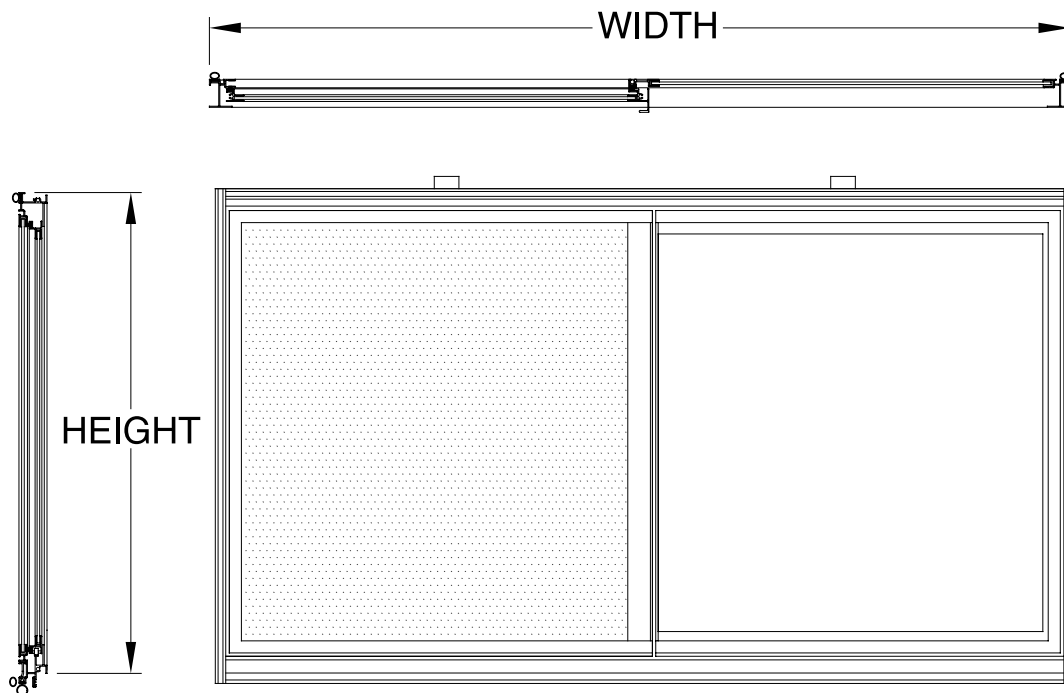
PART NUMBERS	CALL OUT SIZE	OVERALL DIMENSIONS	GLASS EA. LITE	DESCRIPTION	SHIP WT. (LBS)
Aluminum – C-2000 Single Glaze Slider					
91303	1512	30 ¹³ / ₁₆ x 12 ¹ / ₂	15 x 12	Two Lite Slider-Single Glazed	5
91304	1516	30 ¹³ / ₁₆ x 16 ¹ / ₂	15 x 16	Two Lite Slider-Single Glazed	6.5
91305	1520	30 ¹³ / ₁₆ x 20 ¹ / ₂	15 x 20	Two Lite Slider-Single Glazed	7
Aluminum – Single Glaze Hopper					
91053	1512	30 ¹³ / ₁₆ x 12 ¹ / ₂	15 x 12	Two Lite Hopper-Single Glazed	4.5
91054	1516	30 ¹³ / ₁₆ x 16 ¹ / ₂	15 x 16	Two Lite Hopper-Single Glazed	5.75
91055	1520	30 ¹³ / ₁₆ x 20 ¹ / ₂	15 x 20	Two Lite Hopper-Single Glazed	7
Vinyl Pro Single Slider					
87200	1512	30 ⁷ / ₈ x 12 ¹ / ₈	15 x 12	Two Lite Slider-Double Glazed	10
87201	1516	30 ⁷ / ₈ x 16 ¹ / ₈	15 x 16	Two Lite Slider-Double Glazed	12.5
87202	1520	30 ⁷ / ₈ x 20 ¹ / ₈	15 x 20	Two Lite Slider-Double Glazed	15

ALUMINUM SLIDER**Spec Sheet -**

C-2000 Aluminum Slider

Single Glazed

Bucko Frame Size



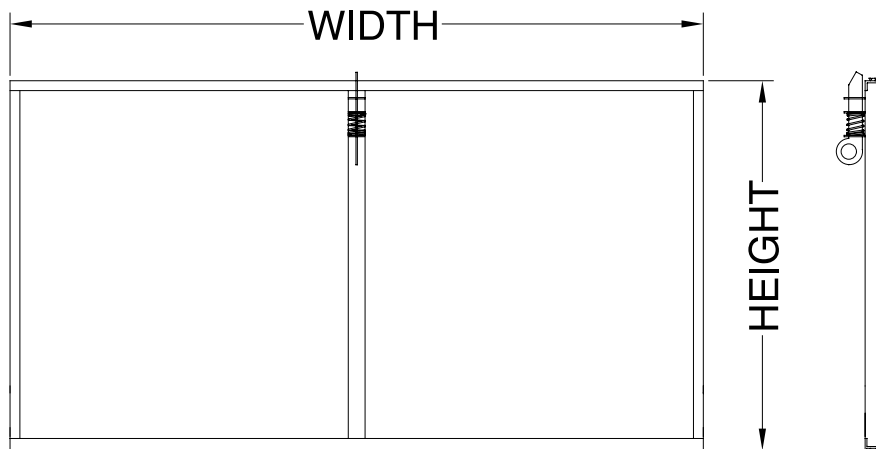
UNIT SIZING - CENTURY 2000 WINDOW
SINGLE GLAZED SLIDER

CALLOUT		FRAME		VIEW AREA	VENT AREA
WIDTH	HEIGHT	WIDTH	HEIGHT		
15	12	30 13/16	12	1.7 SQ. FT.	0.9 SQ. FT.
15	16	30 13/16	16	2.5 SQ. FT.	1.3 SQ. FT.
15	20	30 13/16	20	3.3 SQ. FT.	1.7 SQ. FT.

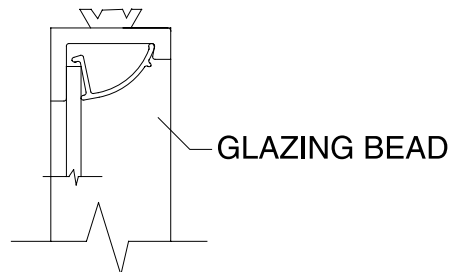
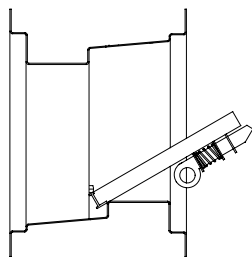
ALUMINUM HOPPER

Spec Sheet -

Aluminum Hopper



INTERIOR SIDE



UNIT SIZING - ALUMINUM HOPPER
SINGLE GLAZED

CALLOUT		FRAME		VIEW AREA
WIDTH	HEIGHT	WIDTH	HEIGHT	
15	12	30 13/16	12 1/2	2.3 SQ. FT.
15	16	30 13/16	16 1/2	3.1 SQ. FT.
15	20	30 13/16	20 1/2	4.0 SQ. FT.

ACCESS DOORS



Steel Access Doors

- Fits into a Bucko frame
- Easy access to any crawl space
- Heavy gauge steel - all welded construction
- Open and close latch accepts padlock
- Available in Galvanized, Gray, and White



ACCESS DOORS			CALLOUT DIMENSIONS	DESCRIPTION	SHIP WT. (LBS)
GALVANIZED	GRAY	WHITE			
95161	95136	95138	15" X 16"	Crawl Space Door - Opens from outside	12.5
95134	95133	95139	15" X 20"	Crawl Space Door - Opens from inside	13
95160	95157	95140	15" X 20"	Crawl Space Door - Opens from outside	13
95149	95158	95141	15" X 24"	Crawl Space Door - Opens from inside	13.5
95151	10107	10592	30" X 20"	Crawl Space Door - Opens from outside	16



Midwest Series Frame

- Cast in Place Steel unit.
- Welded frame for maximum structural strength and rigidity.
- Heavy gauge galvanized steel provides outstanding strength.
- Galvanized steel construction is standard.
- Available in 2' 6" width and 3' 2" or 4' 0" height. Most wall widths also available.
- Nail holes allow for easy installation into a wood forming system.
- Easily clamped into aluminum forming system. Hanging brackets also available.



Vinyl Replacement Slider Insert Midwest Series Frame

- A complete vinyl window to fit inside your existing steel frame.
- The strongest white vinyl – fusion-welded corners on sash and frame.
- The vinyl in our windows will never slip, peel, crack, or need painting.
- 5/8" insulated glass for superior energy savings.
- Complete with half screen.



MIDWEST SERIES



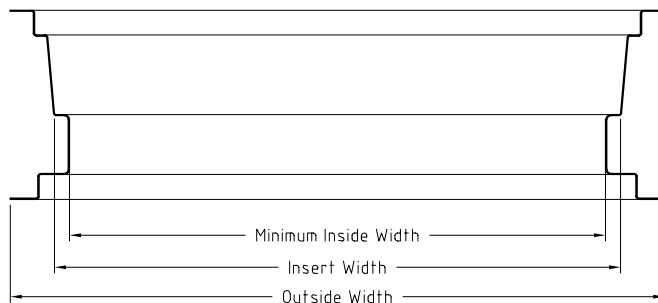
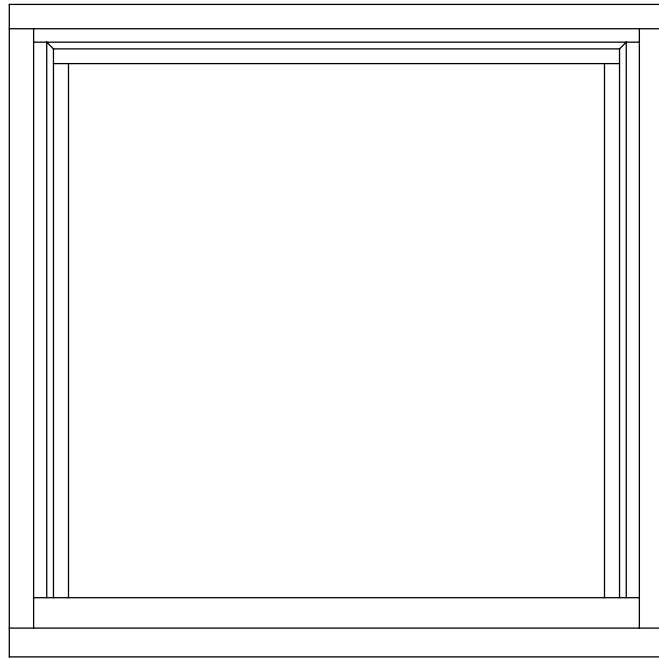
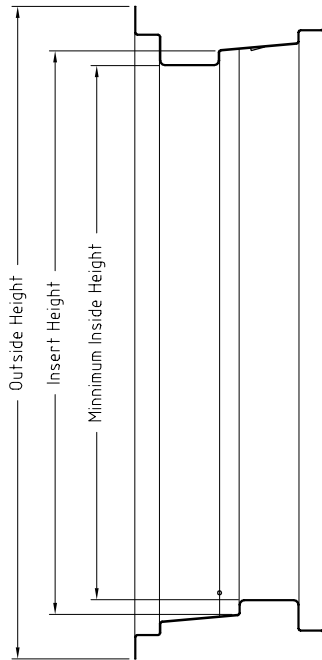
Midwest Series Frame and Insert



PART NUMBERS	CALL OUT SIZE	OVERALL DIMENSION	WALL WIDTH	DESCRIPTION	SHIP WT. (LBS)
FRAME					
Galvanized – For Midwest Series Insert					
97085R	2632	35 1/2 x 39 1/4	8	Steel Frame - Galvanized	22
97097R	2632	35 1/2 x 39 1/4	10	Steel Frame - Galvanized	26
INSERTS					
Vinyl Double Glazed Replacement Window - White					
87326	2632	30 13/16 x 36 7/8	8 or 10	Two Lite Slider-Dual Glazed	28
Aluminum Single Glazed Replacement Window					
91353	2632	30 5/16 x 35 15/16	8 or 10	Two Lite Slider-Dual Glazed	25

MIDWEST SERIES

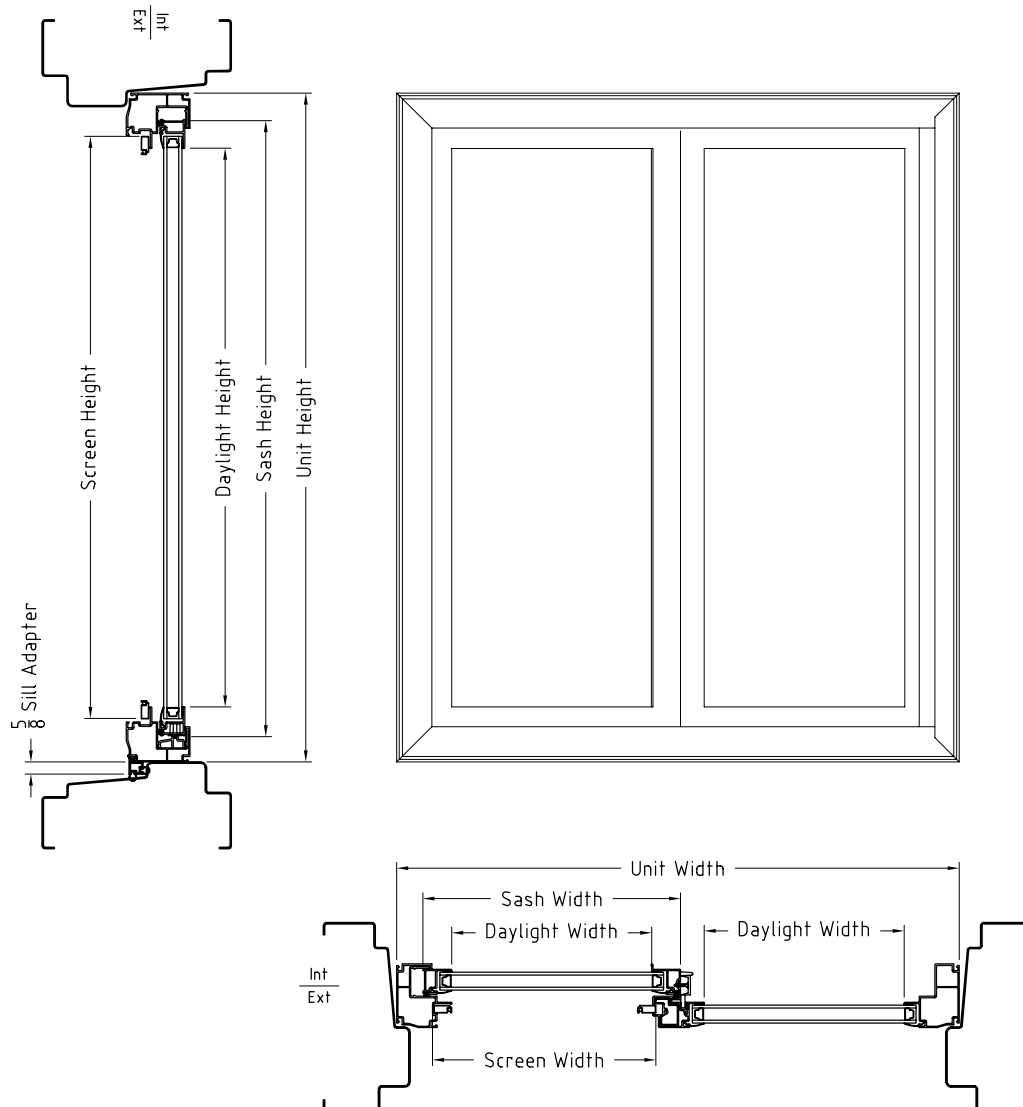
Spec Sheet - Midwest Series Frame



MIDWEST SERIES – UNIT SIZING							
CALL OUT		OUTSIDE		INSERT		MINIMUM INSIDE	
		WIDTH	HEIGHT	WIDTH	HEIGHT	WIDTH	HEIGHT
26	32	35 1/2	40 1/4	31.00	36 9/16	29 3/4	35 5/16

MIDWEST SERIES

Spec Sheet - Midwest Vinyl Single Slider Replacement Window



MIDWEST SERIES															
CALL OUT		UNIT		SASH		VIEW AREA			SCREEN		EGRESS (VENT)			U-VALUES	
		WIDTH	HEIGHT	WIDTH	HEIGHT	WIDTH	HEIGHT	AREA (ft²)	WIDTH	HEIGHT	WIDTH	HEIGHT	AREA (ft²)	STANDARD	LOW-E ARGON
26	32	30 7/8	36 1/2	14 15/32	34 1/4	12 1/32	31 29/32	2.67	12 31/32	32 29/32	12 3/32	31 29/32	2.68	0.49	0.32

POUR-MOLD



Pour-Mold Window

- Designed to work with a variety of pour-molds
- Easy after pour installation
- 1 1/4" sash width improves strength and provides great value
- Double locks on windows with an opening height of 37" or greater
- Operates with fingertip ease on a set of brass rollers



For Pour-Mold systems

INSULATED GLAZING CHOICES:

Clear

Low E & Argon Filled

Custom order options available under Custom & Specialized tab.

CUSTOM ORDER OPTIONS:

Obscure Glass

Tempered Glass

i89 LoE Double Glazed & Argon Filled

PART NUMBERS						
LOW E ARGON	CLEAR	CALL OUT SIZE	OVERALL DIMENSIONS	DESCRIPTION	APPROX. SHIP WT. (LBS)	
WHITE						
97320	97319	3216	31 1/2 X 15 3/4	POUR-MOLD	13.5	
97324	97323	3220	31 1/2 X 19 3/4	POUR-MOLD	16	
EGRESS	97308	97307	4040	47 1/2 X 47 1/2	POUR-MOLD	64
	97312	97314	5040	59 1/2 X 47 1/2	POUR-MOLD	80



Block Out Molds

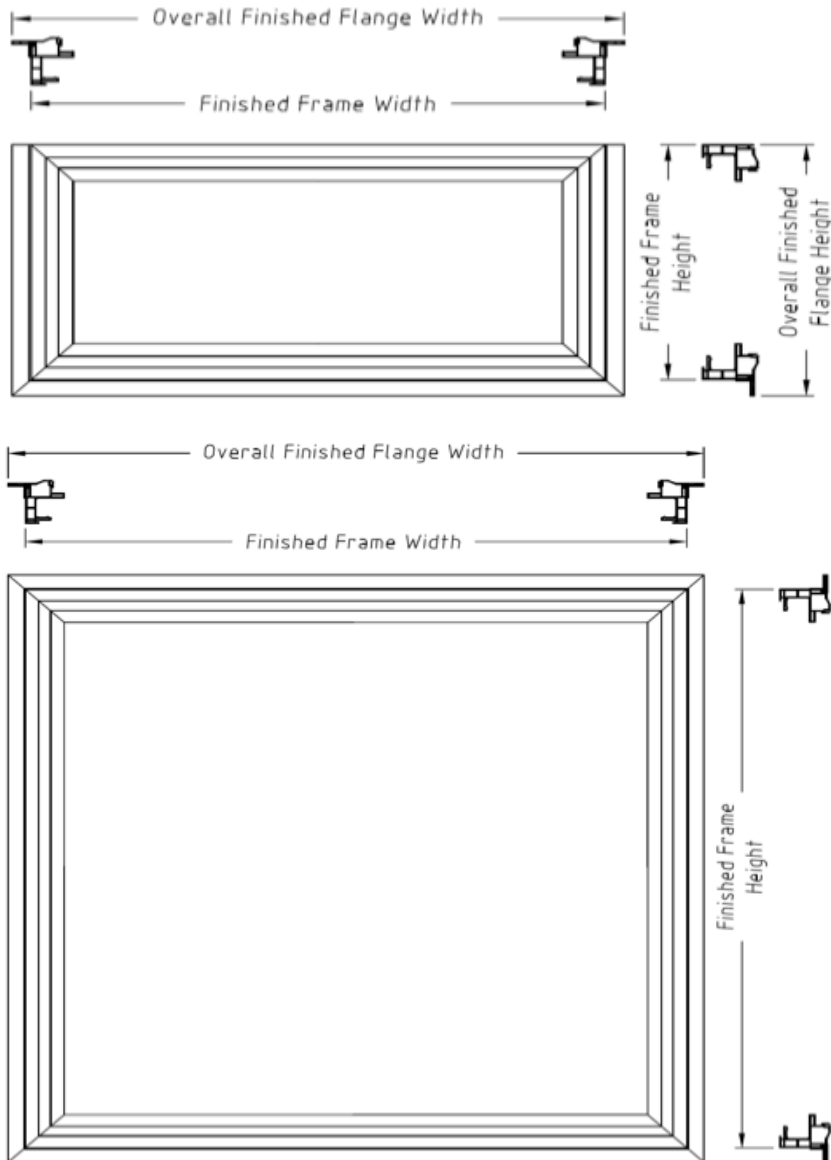
- Designed to pour in place aluminum frames with one operation
- Heavy gauge aluminum construction



	PART NUMBER	CALL OUT SIZE	OVERALL DIMENSIONS	DESCRIPTION
EGRESS	7 1/2" WALL WIDTH			
	97375	3216	32 X 16 1/8	BLOCK OUT MOLD
	97376	3220	32 X 20 1/8	BLOCK OUT MOLD
	97377	4040	48 X 48	BLOCK OUT MOLD
	97379	5040	60 X 48	BLOCK OUT MOLD
	8" WALL WIDTH			
EGRESS	97381	3216	32 X 16 1/8	BLOCK OUT MOLD
	97382	3220	32 X 20 1/8	BLOCK OUT MOLD
	97383	4040	48 X 48	BLOCK OUT MOLD
	97385	5040	60 X 48	BLOCK OUT MOLD



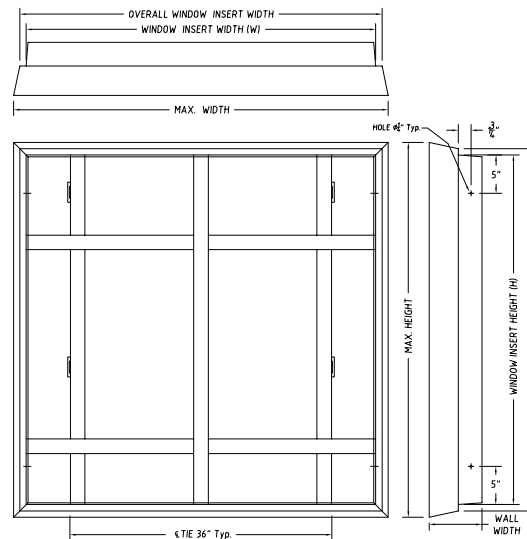
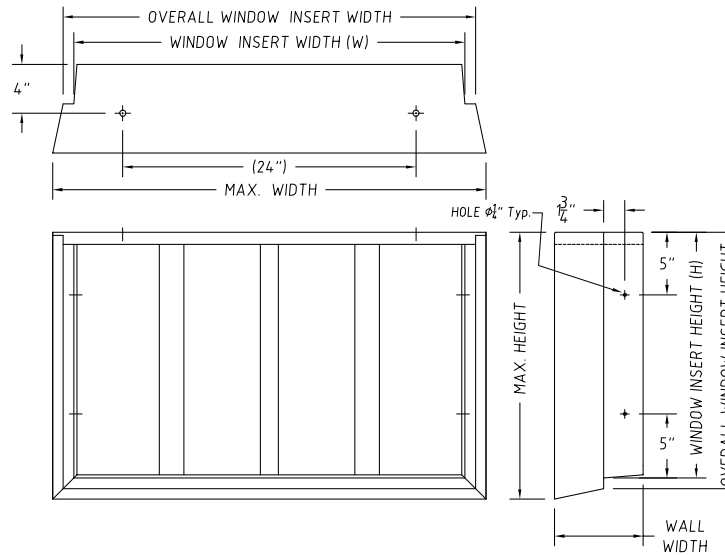
Spec Sheet - Pour-Mold Window



POUR-MOLD SIZING				
CALL OUT	FINISH FRAME		OVERALL FINISHED FLANGE	
	Width	Height	Width	Height
3216	31 3/4	15 1/4	33 1/2	16 3/4
3220	31 3/4	19 1/4	33 1/2	20 3/4
4040	47 1/2	47 1/2	49 1/2	49 1/2
5050	59 1/2	59 1/2	61 1/2	61 1/2

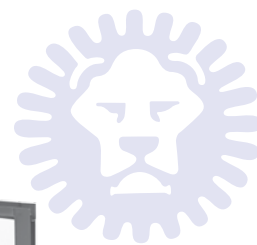


Spec Sheet - Block Out Molds



BLOCK OUT MOLD SIZING				
CALL OUT	FINISHED FRAME		OVERALL FINISHED FLANGE	
	Width	Height	Width	Height
3216	31 3/4	15 1/4	33 1/2	16 3/4
3220	31 3/4	19 1/4	33 1/2	20 3/4
4040	47 1/2	47 1/2	49 1/2	49 1/2
5050	59 1/2	59 1/2	61 1/2	61 1/2

BLOCK FRAME



Standard Block Window Frame and Insert

- Designed to accept the following inserts:
- Monarch C-2000 Aluminum Sliders and Aluminum Hoppers
- Precision construction of heavy gauge steel with grey gloss finish.
Also available in galvanized steel
- Overlapping corners are spot-welded for superior strength.
- Available in 12", 16", or 20" height.
- Steel pouring bucks available for use with concrete walls.

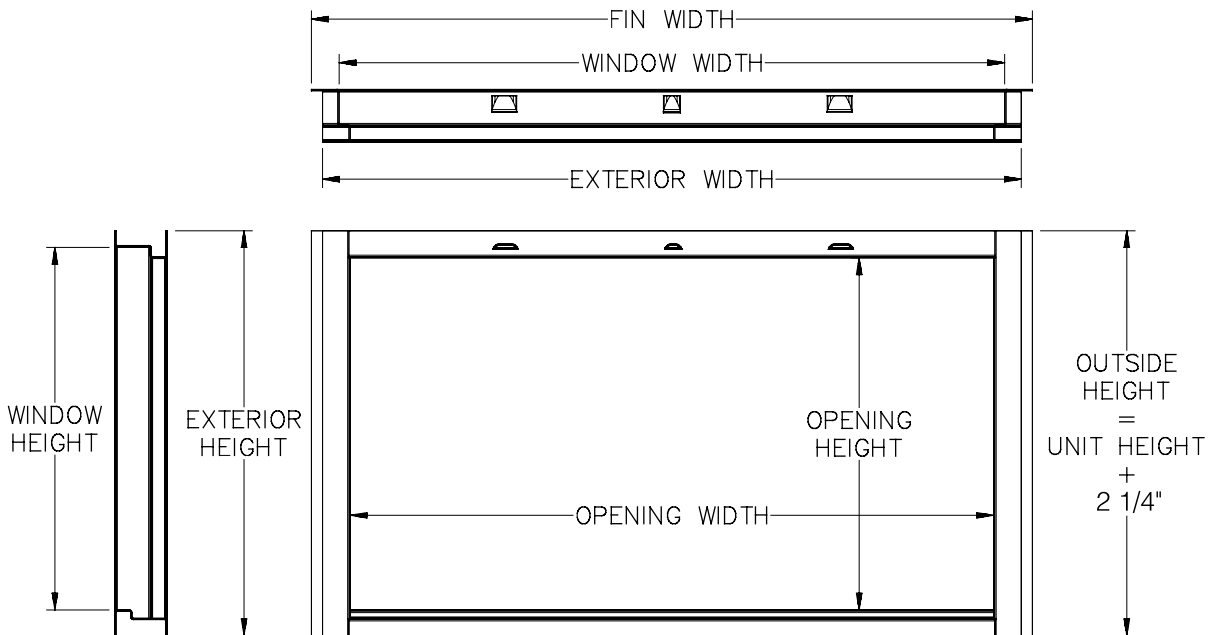


FRAMES					
PART NUMBER	CALL OUT SIZE	OVERALL DIMENSIONS	GLASS EA. LITE	DESCRIPTION	SHIP WT. (LBS)
Standard Steel – Galvanized					
97002	1512	33 1/2 x 14 3/16	Block/Pour Buck	Steel Frame - Galvanized	5
97003	1516	33 1/2 x 18 3/16	Block/Pour Buck	Steel Frame - Galvanized	6.5
97004	1520	33 1/2 x 22 3/16	Block/Pour Buck	Steel Frame - Galvanized	7
Standard Steel - Painted Grey					
93002	1512	33 1/2 x 14 3/16	Block/Pour Buck	Steel Frame - Grey Gloss Finish	5
93003	1516	33 1/2 x 18 3/16	Block/Pour Buck	Steel Frame - Grey Gloss Finish	6.5
93004	1520	33 1/2 x 22 3/16	Block/Pour Buck	Steel Frame - Grey Gloss Finish	7
INSERTS					
Aluminum – C-2000 Single Glaze Slider*					
91303	1512	30 13/16 x 12 1/2	15 x 12	Two Lite Slider-Single Glazed	5
91304	1516	30 13/16 x 16 1/2	15 x 16	Two Lite Slider-Single Glazed	6.5
91305	1520	30 13/16 x 20 1/2	15 x 20	Two Lite Slider-Single Glazed	7
Aluminum – Single Glaze Hopper*					
91053	1512	30 13/16 x 12 1/2	15 x 12	Two Lite Hopper-Single Glazed	4.5
91054	1516	30 13/16 x 16 1/2	15 x 16	Two Lite Hopper-Single Glazed	5.75
91055	1520	30 13/16 x 20 1/2	15 x 20	Two Lite Hopper-Single Glazed	7

*Bulk quantity pricing available with orders of 24 pieces or more, contact Monarch for details.

BLOCK FRAME

Spec Sheet - Standard Steel Frame



ILLUSTRATED FROM
EXTERIOR

UNIT SIZING for STANDARD STEEL FRAME							
CALLOUT		FRAME DIMENSIONS					
		WINDOW AREA		OUTSIDE		CLEAR OPENING	
WIDTH	HEIGHT	WIDTH	HEIGHT	WIDTH	HEIGHT	WIDTH	HEIGHT
15	12	31 1/32	12 1/4	33 1/2	14 1/4	30 1/16	11 3/4
15	16	31 1/32	16 1/4	33 1/2	18 1/4	30 1/16	15 3/4
15	20	31 1/32	20 1/4	33 1/2	22 1/4	30 1/16	19 3/4

Fiberglass Designer Window Well

- Durable, one piece construction - easy to install.
- Multi-layered fiberglass mesh and resin for strength combined with a visually appealing interior show surface.
- The appearance of natural stone at a fraction of the cost.
- Suitable for anchor to foundation applications.
- Ideal for remodeling and new construction.
- Built in steps for easy escape.
- 1 Foot extension available.
- Optional exterior cap to improve backside surface above the backfill.
- Meets IRC exit requirements.

COLOR CHOICES:

Granite

Sandstone



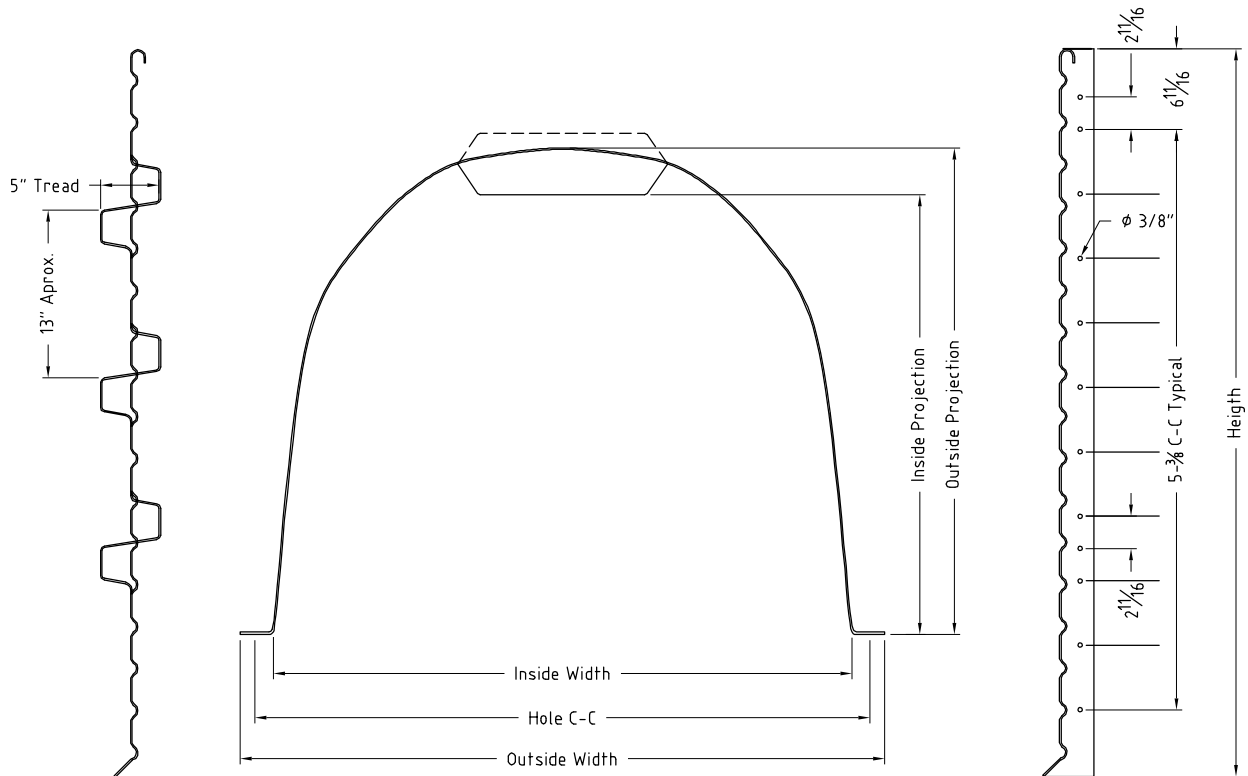
PART NUMBERS			OVERALL DIMENSIONS	DESCRIPTION	SHIP WT. (LBS)
EGRESS	SANDSTONE	GRANITE			
	88518	88529	54" x 38" x 12"	Quarry View® Window Extension	15
	88520	88539	65" x 38" x 12"	Quarry View® Window Extension	18
	88512	N/A	54" x 38" x 60"	Quarry View® Window Well	124
	88513	N/A	54" x 38" x 72"	Quarry View® Window Well	138
	88515	88526	65" x 38" x 60"	Quarry View® Window Well	137
	88516	88527	65" x 38" x 72"	Quarry View® Window Well	154

THERMAL-HINGE COVER			OVERALL DIMENSIONS	DESCRIPTION	SHIP WT. (LBS)
MILL	WHITE	COPPER VEIN			
89263	89265	89078	(54" x 38")	Quarry View® Thermal-Hinge Cover	23
89264	89266	89077	(65" x 38")	Quarry View® Thermal-Hinge Cover	30

GRATE			OVERALL DIMENSIONS	DESCRIPTION	SHIP WT. (LBS)
GRAY	WHITE	COPPER VEIN			
96954	96956	96797	(54" x 38")	Quarry View® Grate	33
96955	96957	96798	(65" x 38")	Quarry View® Grate	38



Spec Sheet - Designer Window Well



QUARRY VIEW® WINDOW WELL							
CALL SIZE	OUTSIDE WIDTH	HOLE C-C	INSIDE WIDTH	INSIDE PROJECTION	HEIGHT	OUTSIDE PROJECTION	STEP QUANTITY
QV 54 38 47	60"	57"	54"	38"	47"	42"	3
QV 54 38 60	60"	57"	54"	38"	60"	42"	4
QV 54 38 72	60"	57"	54"	38"	72"	42"	5
QV 65 36 47	71"	68"	65"	36"	47"	40"	3
QV 65 36 60	71"	68"	65"	36"	60"	40"	4
QV 65 36 72	71"	68"	65"	36"	72"	40"	5

STIF BACK® II

Stif Back® II Window Well

Strongest in the industry

- Designed to withstand the pressure from heavy clay/soil and aggressive back filling
- Superior strength due to deep corrugation
- Available to fit 4' and 5' wide picture window applications for both frame and wall mount
- Single piece (up to 72" high) prevents separation
- See Pricing tab for information on adding a vinyl edge protector

**COLOR CHOICES:**

Galvanized

White

Sandalwood

Stone View

STIF BACK® II



Stif Back® II Window Well

WALL MOUNT (ANCHORED TO FOUNDATION)						
PART NUMBERS						
GALVANIZED	WHITE	SANDALWOOD	STONE VIEW	W x P x H	SHIP WT. (LBS)	
4' WIDE						
	96675	95763	95765	95768	SBII 55 24 24	42
	96701	95764	96766	95769	SBII 55 24 36	56
	96616	96852	96702	95770	SBII 55 24 48	73
	96617	96854	96853	95771	SBII 55 24 60	88
	96618	96856	96855	95810	SBII 55 24 72	112
	96718	95726	96747	95812	SBII 55 24 84	144
EGRESS	96676	95708	97741	95814	SBII 55 36 24	52
	96708	95709	97734	85815	SBII 55 36 36	69
	96619	96858	96857	95772	SBII 55 36 48	89
	96620	96860	96859	95773	SBII 55 36 60	109
	96621	96862	96861	95794	SBII 55 36 72	138
	96724	95729	96770	95816	SBII 55 36 84	177
5' WIDE						
	96679	96771	96773	95774	SBII 67 24 24	48
	96711	96877	96774	95775	SBII 67 24 36	63
	96643	96772	96775	96776	SBII 67 24 48	82
	96644	96876	96878	96777	SBII 67 24 60	100
	96645	96879	96880	95823	SBII 67 24 72	152
	96720	96875	96776	95824	SBII 67 24 84	163
EGRESS	96680	95712	96777	95825	SBII 67 36 24	58
	96712	95713	96778	95826	SBII 67 36 36	76
	96646	96881	96882	95827	SBII 67 36 48	100
	96647	96884	96883	95796	SBII 67 36 60	120
	96648	96885	96886	95825	SBII 67 36 72	152
	96726	95732	96779	95829	SBII 67 36 84	178
6' WIDE						
	96683	96780	96783	95838	SBII 79 24 24	53
	96715	96781	96793	95839	SBII 79 24 36	80
	96655	96899	96785	95840	SBII 79 24 48	91
	96656	96901	96794	95841	SBII 79 24 60	110
	96657	96903	96787	95842	SBII 79 24 72	140
	96722	96782	96788	95843	SBII 79 24 84	190
EGRESS	96684	96984	96789	95844	SBII 79 36 24	63
	96716	96960	96790	95845	SBII 79 36 36	83
	96658	96905	76791	95808	SBII 79 36 48	108
	96659	96907	96908	95846	SBII 79 36 60	131
	96660	96909	96910	95847	SBII 79 36 72	166
	96728	95734	96792	95848	SBII 79 36 84	180

STIF BACK® II



Stif Back® II Window Well

FRAME MOUNT OR WALL MOUNT					
PART NUMBERS					
GALVANIZED	WHITE	SANDALWOOD	STONE VIEW	W x P x H	SHIP WT. (LBS)
4' WIDE					
96673	95725	95737	95778	SBII 49 24 24	40
96699	95735	95738	95779	SBII 49 24 36	52
96604	96842	96841	95780	SBII 49 24 48	68
96605	96844	96843	95781	SBII 49 24 60	86
96606	96846	96845	95809	SBII 49 24 72	104
96717	95736	95739	95811	SBII 49 24 84	137
EGRESS	96674	96911	95740	SBII 49 36 24	49
	96700	96959	95741	SBII 49 36 36	65
	96610	96848	96847	SBII 49 36 48	87
	96611	95707	96613	SBII 49 36 60	108
	96612	96850	96849	SBII 49 36 72	130
	96723	96851	95742	SBII 49 36 84	169
5' WIDE					
	96677	95743	95746	SBII 61 24 24	45
	96709	95744	95747	SBII 61 24 36	59
	96634	96864	96863	SBII 61 24 48	77
	96635	96866	96865	SBII 61 24 60	94
	96636	96868	96867	SBII 61 24 72	119
	96719	95745	95748	SBII 61 24 84	153
EGRESS	96678	95710	95749	SBII 61 36 24	55
	96710	95711	95750	SBII 61 36 36	74
	96637	96870	96869	SBII 61 36 48	94
	96638	96871	96872	SBII 61 36 60	119
	96639	96873	96874	SBII 61 36 72	145
	96725	95731	95751	SBII 61 36 84	188
6' WIDE					
	96681	95752	95757	SBII 72 24 24	51
	96713	95753	95758	SBII 72 24 36	66
	96649	96887	96888	SBII 72 24 48	86
	96650	96889	96890	SBII 72 24 60	105
	96651	96891	96892	SBII 72 24 72	133
	96721	95754	95759	SBII 72 24 84	171
EGRESS	96682	96983	95760	SBII 72 36 24	60
	96714	95755	95761	SBII 72 36 36	79
	96652	96893	96894	SBII 72 36 48	103
	96653	96895	96896	SBII 72 36 60	126
	96654	96897	96896	SBII 72 36 72	159
	96727	96770	95762	SBII 72 36 84	205

STIF BACK® II

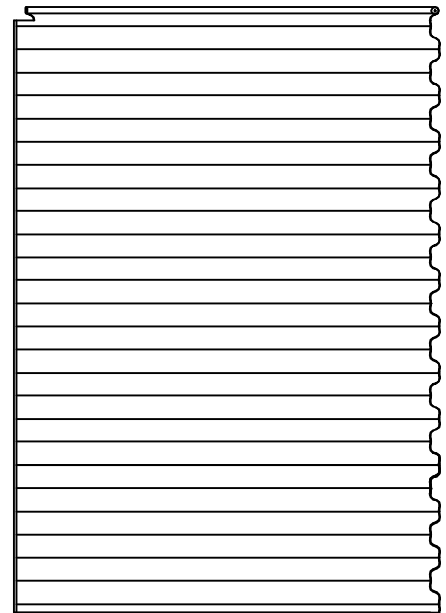
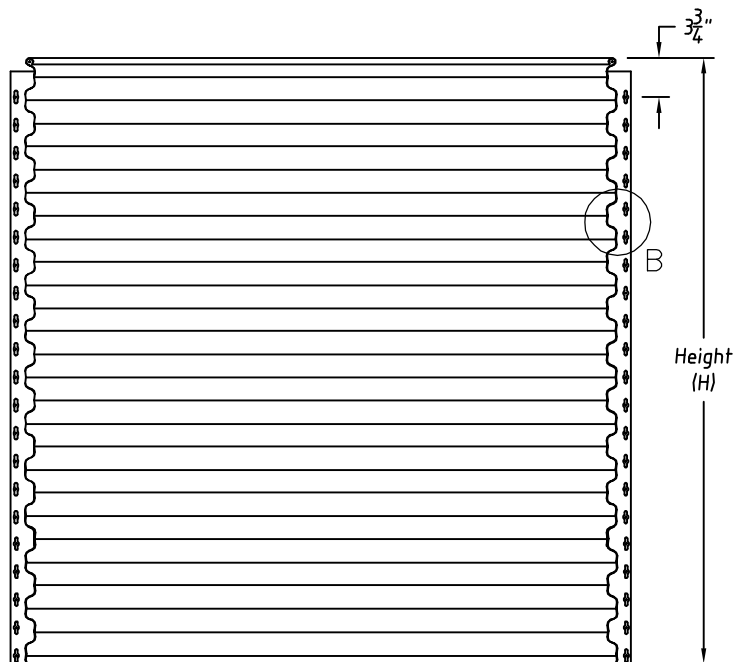
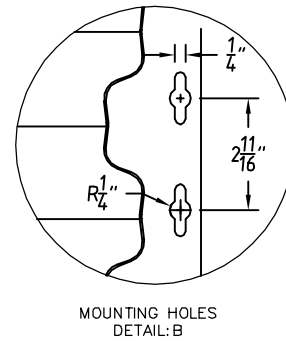
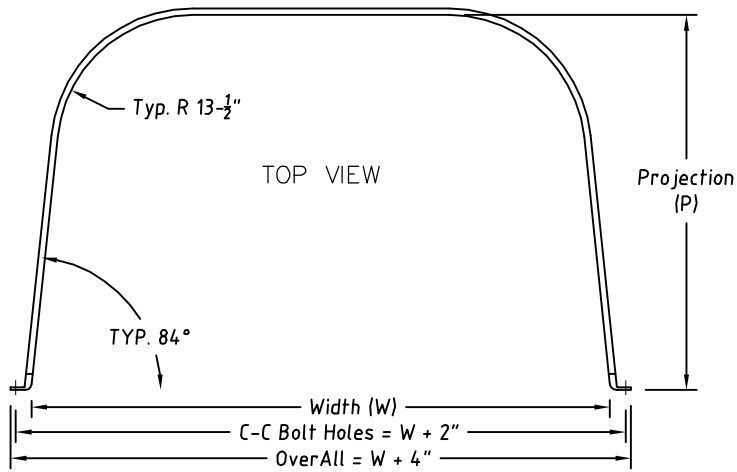


Stif Back® II Window Well

WALL MOUNT (ANCHORED TO FOUNDATION)					
PART NUMBERS					
GALVANIZED	WHITE	SANDALWOOD	STONE VIEW	W x P x H	SHIP WT. (LBS)
4' WIDE					
95683	95718	95677	95799	SBI 42 24 24	32
11020	95681	95676	95849	SBI 42 24 36	44
11022	96963	96962	10550	SBI 42 24 48	58
95679	95675	95674	95682	SBI 42 24 60	74
95965	95704	95689	95766	SBI 42 36 24	41
95694	95703	95688	95968	SBI 42 36 36	49
95693	95702	95687	95756	SBI 42 36 48	63
10122	95701	20000	95967	SBI 42 36 60	77
95692	95700	95686	95733	SBI 42 36 72	91
95691	95699	95685	95730	SBI 42 36 84	105



Spec Sheet - Stif Back® II Window Well



DELUXE STRAIGHT



Deluxe Straight Window Well

- Constructed of heavy gauge galvanized steel for outstanding durability
- Top is $\frac{3}{4}$ " rolled for extra strength and safety
- Pre-punched flanges allow easy attachment to walls and frames

COLOR CHOICES:
Galvanized
White
Sandalwood

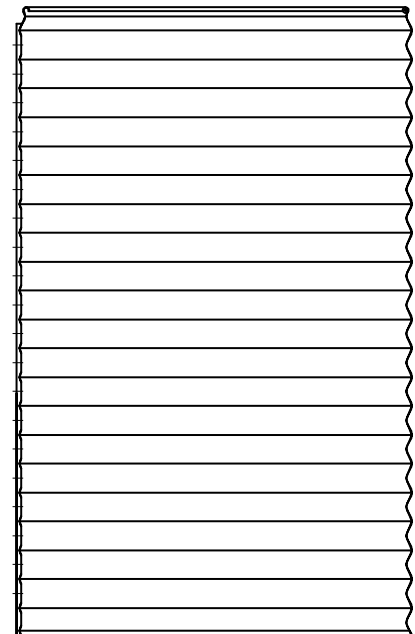
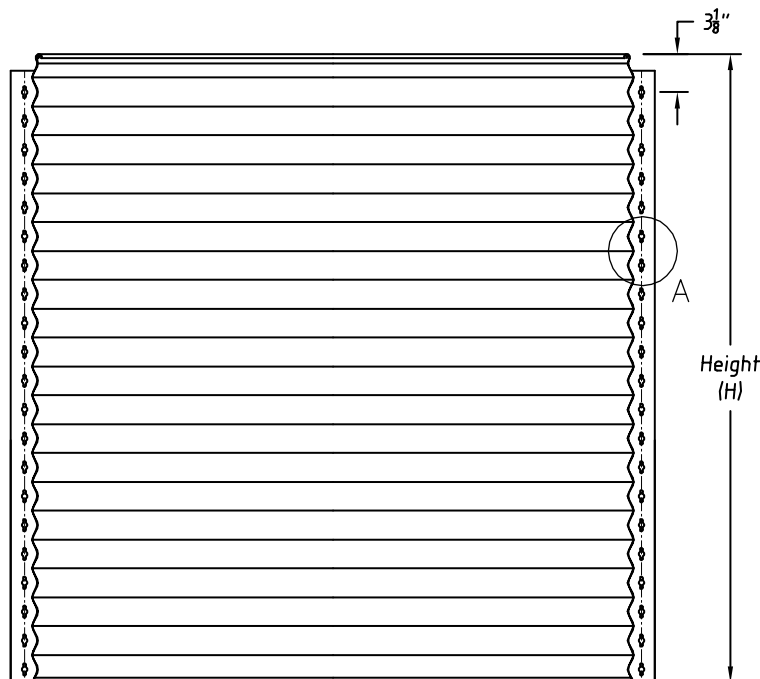
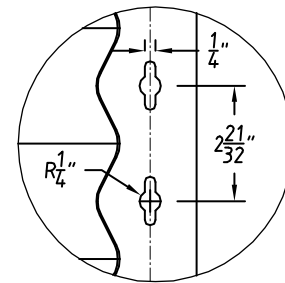
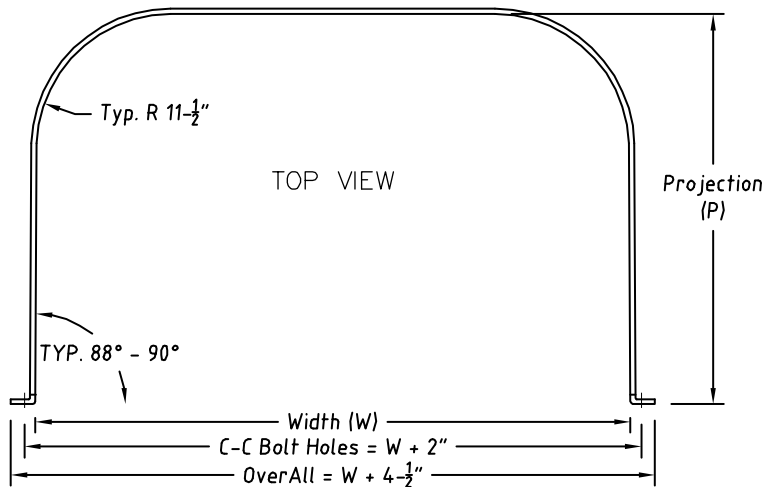


	WALL MOUNT (ANCHORED TO FOUNDATION)				
	PART NUMBERS				
	GALVANIZED	WHITE	SANDALWOOD	W x P x H	SHIP WT. (LBS)
	95401	92074	92075	DS 37 24 12	15
	95403	92076	92077	DS 37 24 24	31
	95405	92078	92079	DS 37 24 36	43
	95406	92080	92081	DS 37 24 48	56
	95407	92082	92083	DS 37 24 60	72
EGRESS	92601	92084	92085	DS 37 36 12	20
	92607	92086	92087	DS 37 36 24	40
	92611	92088	92089	DS 37 36 36	56
	92613	92090	92091	DS 37 36 48	73
	92617	92092	92093	DS 37 36 60	93

	FRAME MOUNT (BOLT TO MONARCH FRAME)				
	95401	92074	92075	DS 37 24 12	15
	95403	92076	92077	DS 37 24 24	31
	95405	92078	92079	DS 37 24 36	43
	95406	92080	92081	DS 37 24 48	56
	95407	92082	92083	DS 37 24 60	72
EGRESS	92601	92084	92085	DS 37 36 12	20
	92607	92086	92087	DS 37 36 24	40
	92611	92088	92089	DS 37 36 36	56
	92613	92090	92091	DS 37 36 48	73
	92617	92092	92093	DS 37 36 60	93



Spec Sheet - Deluxe Straight Window Well





Round and Straight Window Well

- Constructed of 20 gauge steel for solid durability
- Top is $\frac{3}{4}$ " rolled for extra strength and safety
- Available in 22" to 46" widths, 10" to 36" projections and 12" to 60" heights

WALL MOUNT (ANCHORED TO FOUNDATION)				
PART NUMBERS				
GALVANIZED	WHITE	SANDALWOOD	W x P x H	SHIP WT. (LBS)
ECONOMY ROUND				
92010	92063	92064	ER 37 16 12	12
92013	95719	92065	ER 37 16 24	21
92014	95721	92066	ER 37 16 30	24
92015	95722	92067	ER 37 16 36	29
92016	92069	92070	ER 37 16 48	35
92207	92208	92038	DR 46 20 12	14
92213	92039	92040	DR 46 20 24	29
92221	92041	92042	DR 46 20 48	60
92225	92043	92045	DR 46 20 60	73
ECONOMY STRAIGHT				
92003	92054	92056	ES 37 12 12	9
92005	95723	92057	ES 37 12 18	12
92006	95724	92058	ES 37 12 24	17
92007	92059	92060	ES 37 12 30	21
92008	92061	92062	ES 37 12 36	25

FRAME MOUNT (BOLT TO MONARCH FRAME)				
ECONOMY ROUND				
92023	92030	92031	ER 32 16 12	11
92026	92032	92033	ER 32 16 24	19
92027	92034	92035	ER 32 16 30	23
92028	92036	92037	ER 32 16 36	27
ECONOMY STRAIGHT				
92017	92046	92047	ES 32 12 12	20
92020	92049	92051	ES 32 12 24	40
92022	92052	92053	ES 32 12 36	56

FOUNDATION VENT WINDOW WELL				
92009	92071	92073	ER 22 10 12	7



COLOR CHOICES:

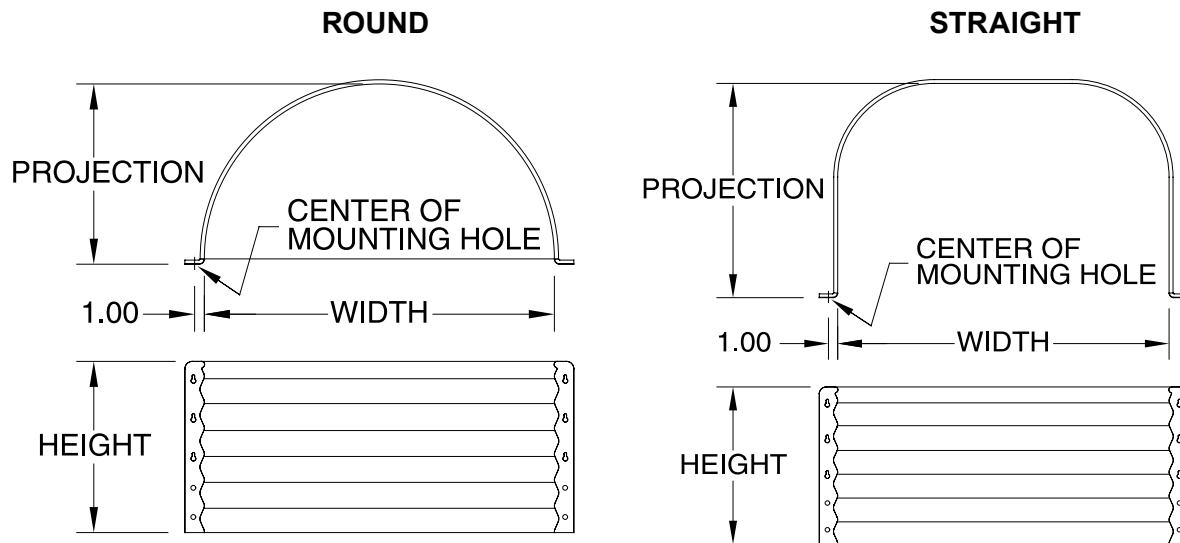
Galvanized

White

Sandalwood



Spec Sheet - Round and Straight Window Well



NOMENCLATURE = (WIDTH), (PROJECTION), (HEIGHT)
HOLES CENTERS = WIDTH + 2.00"



Thermal-Hinge Cover™

- Hinged latch for ventilation and egress. Not like a bubble or flat cover that does not allow air to come in.
- Saves energy. The fluted design of the polycarbonate will increase the thermal performance of any basement window.
- Three colors available: Aluminum polished, White and Sandalwood.
- Sloped for rain, ice and snow runoff.
- One-handed, easy latch operation for Egress compliance.
- Protects people and pets from falling into the well (cover can support at least 44 lbs. per square foot).



FINISH CHOICES:

Aluminum Mill

White

Copper Vein

Custom order options available under Custom & Specialized tab.

THERMAL HINGE COVER™				
PART NUMBERS				
MILL	WHITE	COPPER VEIN	DESCRIPTION/SIZE	SHIP WT. (LBS)
STIF BACK® II				
89119	89118	89117	SBII 42 X 24	14
89257	89258	89259	SBII 42 X 36	15
89120	89160	89312	SBII 49 X 24	16
89121	89161	89109	SBII 49 X 36	20
89123	89163	89313	SBII 55 X 24	17
89124	89164	89110	SBII 55 X 36	21
89126	89166	89074	SBII 61 X 24	19
89127	89167	89111	SBII 61 X 36	23
89128	89168	89314	SBII 67 X 24	21
89129	89169	89131	SBII 67 X 36	25
89202	89260	89112	SBII 73 X 36	27
89204	89262	89113	SBII 79 X 36	30
DELUXE STRAIGHT				
89100	89140	10064	DS 37 X 24	12
89152	89151	89073	DS 37 X 36	15
89101	89141	89072	DS 42 X 24	14
89102	89142	89114	DS 42 X 36	17
89103	89143	89071	DS 46 X 20	14

WELL COVERS



EZ Thermal Cover®

- Strong and durable at a fraction of the cost of the Thermal-Hinged Cover™
- Made from high strength fluted polycarbonate
- Covers clip in place, but pop off easily for safe exits during an emergency
- Light weight and easy to install



FINISH CHOICES:

Aluminum Mill

White

Copper Vein

EZ THERMAL COVER®				
PART NUMBERS				
MILL	WHITE	COPPER VEIN	DESCRIPTION/SIZE	SHIP WT. (LBS)
STIF BACK® II				
11367	11366	10703	SBII 42 X 24	6
10539	89309	89310	SBII 42 X 36	6
89284	89272	89320	SBII 49 X 24	7
89285	89268	10256	SBII 49 X 36	10
89289	89273	89321	SBII 55 X 24	7
89286	89269	10257	SBII 55 X 36	11
89287	89274	89070	SBII 61 X 24	8
89288	89270	10258	SBII 61 X 36	12
89290	89275	89069	SBII 67 X 24	9
89291	89271	89115	SBII 67 X 36	14
DELUXE STRAIGHT				
89292	89300	89068	ES 37 X 16	9
89295	89296	89067	DS 37 X 36	12
89293	89301	89107	DS 42 X 24	13
89294	89302	89116	DS 42 X 36	15



Steel Grate

- Grates are constructed of steel angle and flattened expanded metal for strength and durability
- Lightweight grate is easy to lift for exit requirements

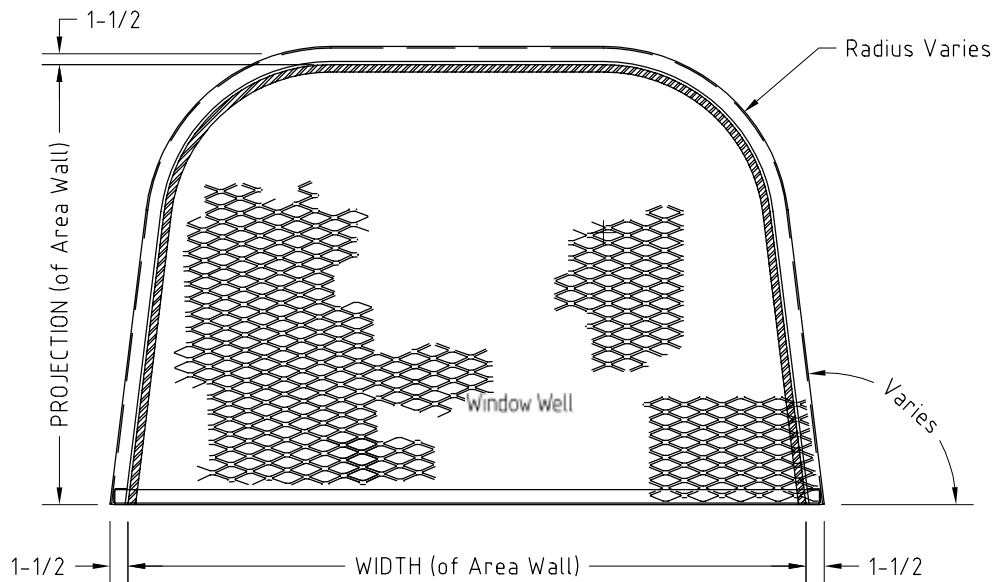
FINISH CHOICES:
Gray
White
Copper Vein



STEEL GRATES				
PART NUMBERS				
GRAY	WHITE	COPPER VEIN	DESCRIPTION/SIZE	SHIP WT. (LBS)
STIF BACK® II				
97005	97001	96992	SBI 42 X 24	16
10541	10540	96796	SBI 42 X 36	24
96941	96940	96812	SBI 49 X 24	20
96917	96916	96814	SBI 49 X 36	26
96942	96943	96816	SBI 49 X 48	31
96945	96946	96818	SBI 55 X 24	22
96919	96918	96819	SBI 55 X 36	28
96949	96948	96821	SBI 61 X 24	26
96951	96950	96823	SBI 61 X 36	34
96953	96952	96825	SBI 67 X 24	28
96920	96921	96827	SBI 67 X 36	36
96970	96971	96829	SBI 73 X 24	30
96966	96965	96831	SBI 73 X 36	38
96972	96973	96833	SBI 79 X 24	32
96987	96988	96991	SBI 79 X 36	41
DELUXE STRAIGHT				
96990	96932	96838	ER 22 X 10	2
96982	96981	96839	ER 32 X 16	8
96985	96986	96840	ES 37 X 12	7
96980	96979	96805	ER 37 X 16	9
96929	96933	96804	DR 46 X 20	15
96923	96922	96803	DS 37 X 24	14
96961	96936	96802	DS 37 X 36	21
96925	96924	96801	DS 42 X 24	16
96927	96926	96800	DS 42 X 36	24



Spec Sheet - Window Well Grate





Stif Back® II Poly Grate Cover

- Made of clear .060" thick polycarbonate
- Molded over edge for clean and smooth finish
- Molded rib across back for angle area and molded center ribs for added strength and support
- Designed to be used with the Stif Back® II grate



STIF BACK® II POLY GRATE		
PART NUMBER	DESCRIPTION/SIZE	SHIP WT. (LBS)
STIF BACK® II		
89098	SBII 49 X 36	5
89099	SBII 55 X 36	5
89097	SBII 61 X 36	5



Steel Ladders

- Steel ladders made of high-grade steel
- Dimensions are 12" step-to-step, 4" projection
- Bolt holes in ladder for permanent attachment

FINISH CHOICES:

Gray

White

Copper Vein

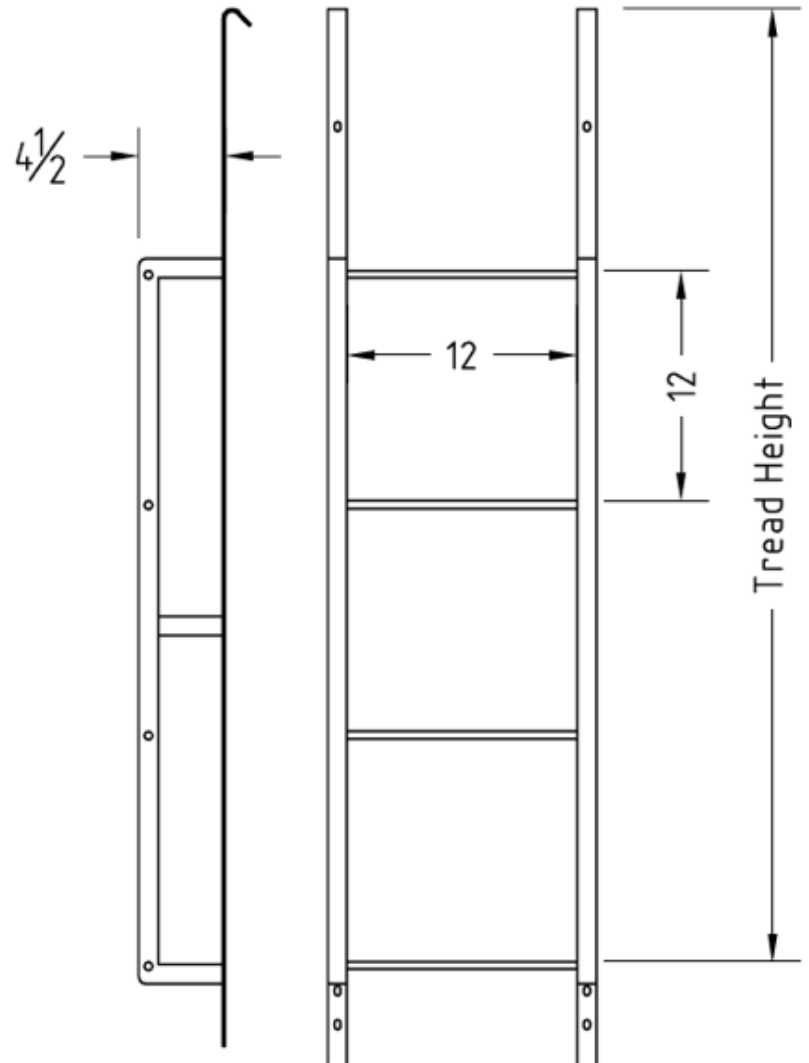
Custom order options available under
Custom & Specialized tab.

LADDERS				
PART NUMBERS				
GRAY	WHITE	COPPER VEIN	DESCRIPTION/ SIZE	SHIP WT. (LBS)
95084	95518	95087	3 Rung Ladder	12
95085	95519	95088	4 Rung Ladder	16
95132	95520	95089	5 Rung Ladder	21
95137	95521	95090	6 Rung Ladder	25
95143	95142	95091	7 Rung Ladder	29



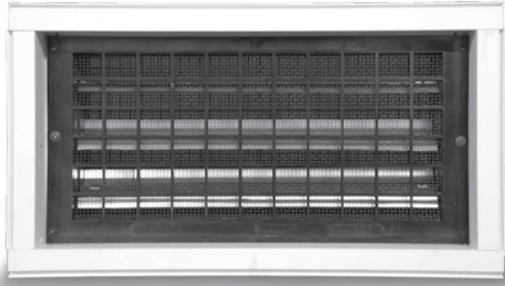


LADDER HEIGHT SIZING		
NO OF RUNGS	OVERALL HEIGHT	TREAD HEIGHT
3	42 3/4	37 1/2
4	54 3/4	49 1/2
5	66 3/4	61 1/2
6	78 3/4	73 1/2
7	90 3/4	85 1/2

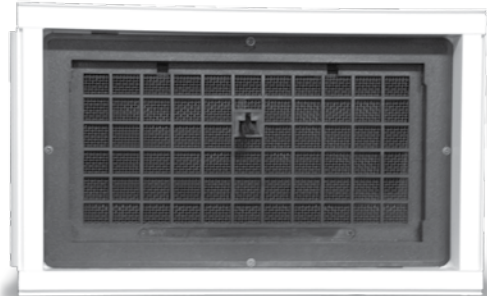




Premier Vinyl Vent



Thermostatically operated vinyl vent insert

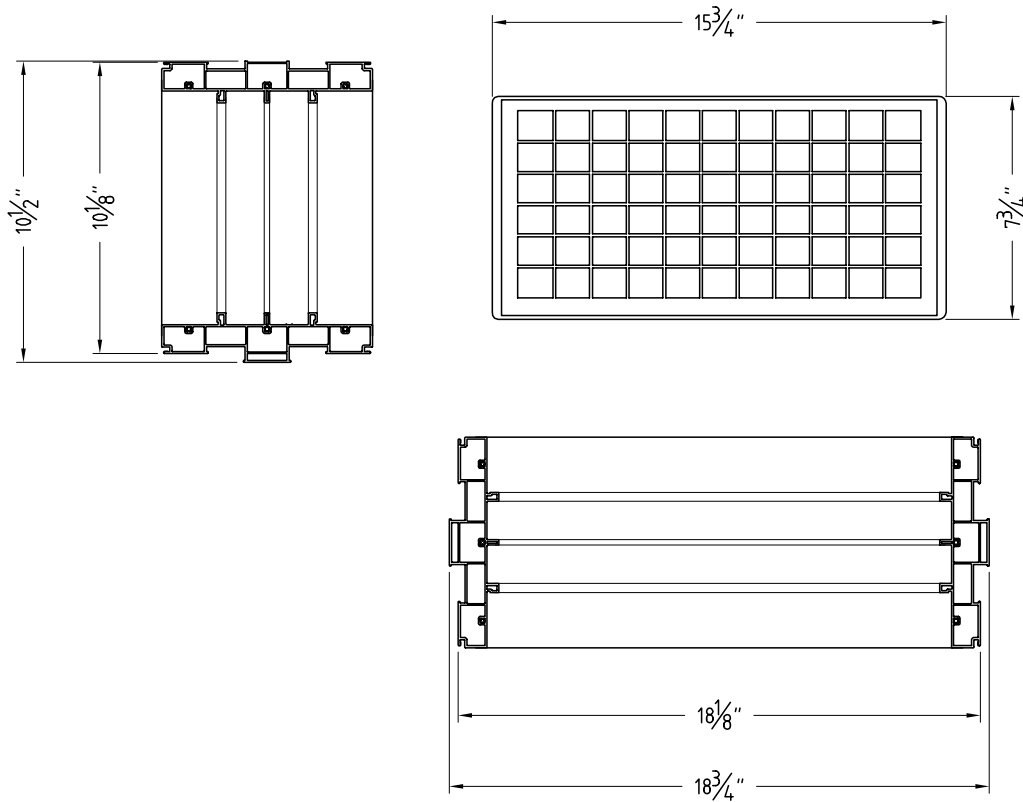


Manually operated vinyl vent insert

- Pour in place system
- Available in nominal and full wall widths
- Available with two vent insert options:
 - Manually operated, easy to open vinyl vent insert – opens from outside
 - Thermostatically controlled vinyl vent insert – vent automatically opens at 70° F and closes at 40° F.

	PART NUMBERS	OVERALL DIMENSIONS	DESCRIPTION	SHIP WT. (LBS)
7 1/2" WALL				
Thermostatically	70500	18 3/4 X 10 1/2	WHITE VINYL VENTS	10
Manual	87441	20 1/8 X 12 5/16	WHITE VINYL VENTS	10
8" WALL				
Thermostatically	70501	18 3/4 X 10 1/2	WHITE VINYL VENTS	10
Manual	87442	20 1/8 X 12 5/16	WHITE VINYL VENTS	10
9 " WALL				
Thermostatically	70502	18 3/4 X 10 1/2	WHITE VINYL VENTS	10
Manual	87443	20 1/8 X 12 5/16	WHITE VINYL VENTS	10
9 1/2" WALL				
Thermostatically	70503	18 3/4 X 10 1/2	WHITE VINYL VENTS	11
Manual	87444	20 1/8 X 12 5/16	WHITE VINYL VENTS	11
10" WALL				
Thermostatically	70504	18 3/4 X 10 1/2	WHITE VINYL VENTS	12
Manual	87445	20 1/8 X 12 5/16	WHITE VINYL VENTS	12
12" WALL				
Thermostatically	70505	18 3/4 X 10 1/2	WHITE VINYL VENTS	13
Manual	87446	20 1/8 X 12 5/16	WHITE VINYL VENTS	13

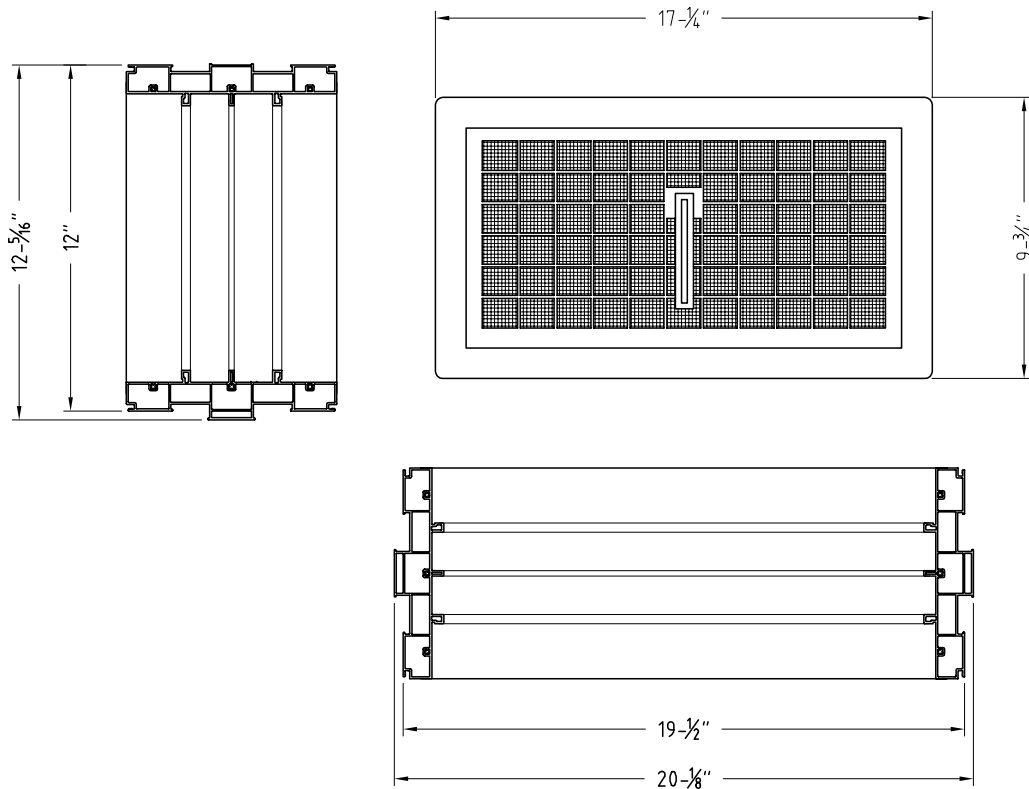
Pallet Quantities: Wall widths 7.5, 8, 9, 9.5 - 64 Units per pallet
 Wall widths 10, 12 - 48 Units per pallet



FOUNDATION VENT		
No. of Vents	Vent Area (ft ²)*	2006 IRC Service Area (ft ²)**
4	1.81	2,708
5	2.26	3,385
6	2.70	4,062
7	3.16	4,739
8	3.61	5,416

* Based upon .451 ft² area per vent

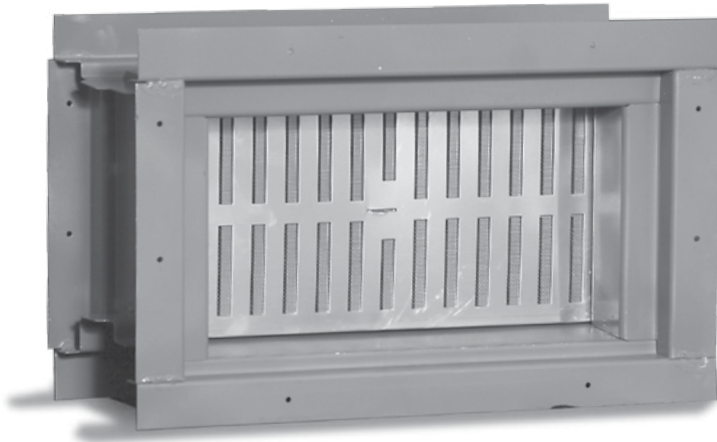
** Assumes ground is covered with approved vapor retarder per R408.2, exception no. 2



FOUNDATION VENT		
No. of Vents	Vent Area (ft ²)*	2006 IRC Service Area (ft ²)**
4	1.81	2,708
5	2.26	3,385
6	2.70	4,062
7	3.16	4,739
8	3.61	5,416

* Based upon .451 ft² area per vent

** Assumes ground is covered with approved vapor retarder per R408.2, exception no. 2

STEEL**Foundation Venting System**

- System available in a variety of wall widths – easily installed in poured concrete or concrete block walls without modification
- Welded frame for maximum structural strength and rigidity
- Vent opens and closes with ease, allowing ventilation in any season
- Insert constructed aluminum with aluminum screen

FINISH CHOICES:

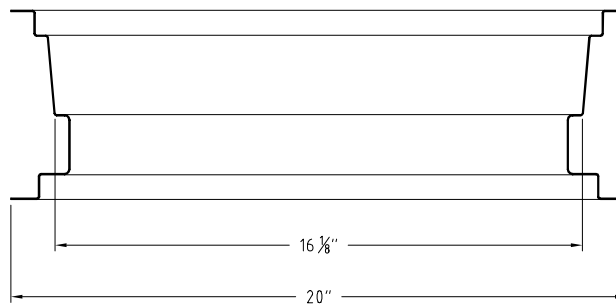
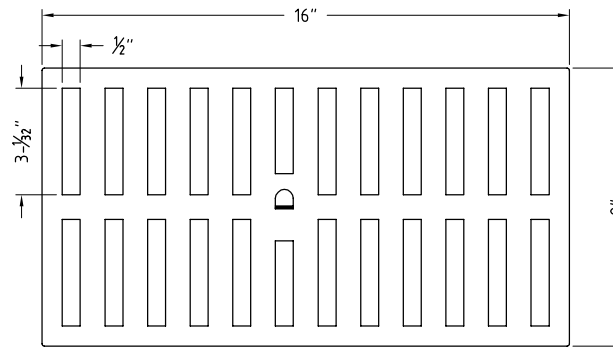
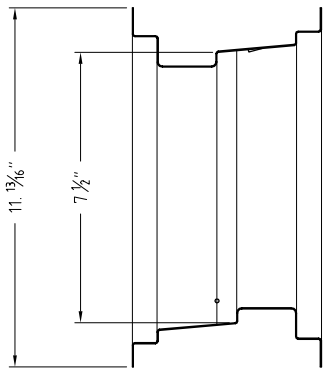
Gray

Galvanized

PART NUMBERS			
GRAY	GALVANIZED	DESCRIPTION/SIZE	SHIP WT. (LBS)
7 1/2" WALL			
95007R	97127R	Steel Vent Bucko	8.75
8" WALL			
95001R	97129R	Steel Vent Bucko	10.75
10" WALL			
95003R	97135R	Steel Vent Bucko	13



Spec Sheet -



FOUNDATION VENT				
AIR VELOCITY (MPH)	AIR FLOW CFM*		NO. OF VENTS	2006 IRC SERVICE AREA (FT ²)**
5	80.5		4	1098.0
10	161.0		5	1372.5
15	241.5		6	1647.0
20	322.0		7	1921.5
			8	2196.0
			9	2470.5
			10	2745.0

* Based upon .451 ft² area per vent
 ** Assumes ground is covered with approved vapor retarder per R408.2, exception no. 2



REPLACEMENT PARTS - PREMIER V ®	
PART #	DESCRIPTION
12239	WALL WIDTH EXTENSION - 9/16" (SOLD PER FOOT OF EXTENSION)
12240	WALL WIDTH EXTENSION - 1 9/16" (SOLD PER FOOT OF EXTENSION)
12241	WALL WIDTH EXTENSION - 2" (SOLD PER FOOT OF EXTENSION)
12234	TOP HEAD SILL TRACK (SOLD PER FOOT OF EXTENSION)
12236	BOTTOM SILL TRACK (SOLD PER FOOT OF EXTENSION)
15314	3012 SCREEN ONLY
15315	3016 SCREEN ONLY
15316	3020 SCREEN ONLY
15317	3024 SCREEN ONLY
15328	3030 SCREEN ONLY
15322	3036 SCREEN ONLY
15329	3040 SCREEN ONLY
15318	3616 SCREEN ONLY
15319	3620 SCREEN ONLY
15320	3624 SCREEN ONLY
15323	4036 SCREEN ONLY
15324	4040 SCREEN ONLY
15327	4050 SCREEN ONLY
15330	5030 SCREEN ONLY
15325	5040 SCREEN ONLY
15326	5050 SCREEN ONLY



REPLACEMENT PARTS - PREMIER V ®		
PART # LOW E	PART # CLEAR	DESCRIPTION
70329	70303	3016 FIXED SLIDER SASH WITH KEEPER
70331	70305	3020 FIXED SLIDER SASH WITH KEEPER
N/A	70307	3024 FIXED SLIDER SASH WITH KEEPER
70343	70317	3036 FIXED SLIDER SASH WITH KEEPER
70345	70319	4036 FIXED SLIDER SASH WITH KEEPER
70347	70321	4040 FIXED SLIDER SASH WITH KEEPER
70417	70512	4050 FIXED SLIDER SASH WITH KEEPER
70508	70514	5030 FIXED SLIDER SASH WITH KEEPER
70349	70323	5040 FIXED SLIDER SASH WITH KEEPER
70351	70325	5050 FIXED SLIDER SASH WITH KEEPER
70328	70302	3016 OPERATOR SLIDER SASH WITH LOCK
70330	70304	3020 OPERATOR SLIDER SASH WITH LOCK
70332	70306	3024 OPERATOR SLIDER SASH WITH LOCK
70342	70316	3036 OPERATOR SLIDER SASH WITH LOCK
70344	70318	4036 OPERATOR SLIDER SASH WITH LOCK
70346	70320	4040 OPERATOR SLIDER SASH WITH LOCK
70416	70511	4050 OPERATOR SLIDER SASH WITH LOCK
70507	70513	5030 OPERATOR SLIDER SASH WITH LOCK
70348	70322	5040 OPERATOR SLIDER SASH WITH LOCK
70350	70324	5050 OPERATOR SLIDER SASH WITH LOCK
70396	70390	3016 COMPLETE SASH AND SCREEN SET
70397	70391	3020 COMPLETE SASH AND SCREEN SET
70398	70392	3024 COMPLETE SASH AND SCREEN SET
N/A	70384	3036 COMPLETE SASH AND SCREEN SET
70399	70393	4040 COMPLETE SASH AND SCREEN SET
70435	70404	4050 COMPLETE SASH AND SCREEN SET
N/A	70506	5030 COMPLETE SASH AND SCREEN SET
70400	70394	5040 COMPLETE SASH AND SCREEN SET
70401	70395	5050 COMPLETE SASH AND SCREEN SET



REPLACEMENT PARTS - VINYL PRO™		
PART #	DESCRIPTION	
15400	1512 SCREEN ONLY	
15401	1516 SCREEN ONLY	
15402	1520 SCREEN ONLY	
15405	2630 SCREEN ONLY	
15406	3020 SCREEN ONLY	
15407	3030 SCREEN ONLY	
15408	3036 SCREEN ONLY	
15409	3040 SCREEN ONLY	
15410	4036 SCREEN ONLY	
15411	4040 SCREEN ONLY	
15413	4050 SCREEN ONLY	
15414	5040 SCREEN ONLY	
15415	5050 SCREEN ONLY	
15416	6040 SCREEN ONLY	
PART # LOW E	PART # CLEAR	DESCRIPTION
87260	87240	1512 OPERATING SASH
87261	87241	1516 OPERATING SASH
87262	87242	1520 OPERATING SASH
87121	87081	2630 OPERATING SASH
87122	87082	3020 OPERATING SASH
87123	87083	3030 OPERATING SASH
87124	87084	3036 OPERATING SASH
87125	87085	3040 OPERATING SASH
87126	87086	4036 OPERATING SASH
87127	87087	4040 OPERATING SASH
87128	87088	4050 OPERATING SASH
87129	87089	5040 OPERATING SASH
87130	87090	5050 OPERATING SASH
87131	87091	6040 OPERATING SASH
REPLACEMENT PARTS - POUR MOLD		
PART # LOW E	PART # CLEAR	DESCRIPTION
70366	70365	3216 PF OPERATING SASH
70370	70369	3216 OPERATING SASH
70362	70361	3220 PF OPERATING SASH
70358	70357	3220 OPERATING SASH
70354	70353	4040 OPERATING SASH